

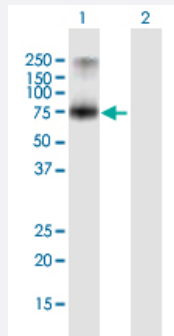
MaxPab®

PCSK7 purified MaxPab mouse polyclonal antibody (B01P)

Catalog # H00009159-B01P

Size 50 ug

Applications



Western Blot (Transfected lysate)

Western Blot analysis of PCSK7 expression in transfected 293T cell line ([H00009159-T01](#)) by PCSK7 MaxPab polyclonal antibody.

Lane 1: PCSK7 transfected lysate(65.01 KDa).

Lane 2: Non-transfected lysate.

Specification

Product Description	Mouse polyclonal antibody raised against a full-length human PCSK7 protein.
Immunogen	PCSK7 (AAH06357.1, 1 a.a. ~ 591 a.a) full-length human protein.
Sequence	MPKGRQKVPHLDAPLGLPTCLWLELAGLFLVPWVMGLAGTGGPDGQGTGGPSWAVHLESLE GDGEEETLEQQADALAQAAGLVNAGRIGELQGHYLFVQPAHRPALEVEAIRQQVEAVLAGHEA VRWHSEQRLLRRAKRSVHFNDPKYPQQWHLNNRRSPGRDINVTGVWERNVTGRGVTVVVVDD GVEHTIQDIAPNYSPEGSYDLNSNDPDPMPHPDVENGHHGTRCAGEIAAVPNNSFCAVGVAYG SRIAGIRVLDGPLTDSMEAVAFNKHQYQINDIYSCSWGPDGDKTVDPHQLGKAALQHGVIAGRQ GFGSIFVVASGNGGQHNDNCNYDGYANSIYTVTIGAVDEEGRMPFYAEECASMLAVTFSGGDKML RSIVTTDWDLQKGTGCTEGHTGTSAAPLAAGMIALMLQVRPCLTWRDVQHIMFTATRYEDRRAE WVTNEAGFSSHQHGFGLLNAWRLVNAAKIWTSVPYLASYVSPVLKENKAIPQSPRSLEVLWNV SRMDLEMSGKLTLEHAVTVSITHPRRGSLELKLFCPSGMMSLIGAPRSMDSWLCVECSRHQGQ TKAVRECHEWKIPAR
Host	Mouse
Reactivity	Human
Interspecies Antigen Sequence	Mouse (85); Rat (87)

Quality Control Testing	Antibody reactive against mammalian transfected lysate.
Storage Buffer	In 1x PBS, pH 7.4
Storage Instruction	Store at -20°C or lower. Aliquot to avoid repeated freezing and thawing.

Applications

- Western Blot (Transfected lysate)

Western Blot analysis of PCSK7 expression in transfected 293T cell line ([H00009159-T01](#)) by PCSK7 MaxPab polyclonal antibody.

Lane 1: PCSK7 transfected lysate(65.01 KDa).

Lane 2: Non-transfected lysate.

[Protocol Download](#)

Gene Info — PCSK7

Entrez GeneID	9159
GeneBank Accession#	BC006357.2
Protein Accession#	AAH06357.1
Gene Name	PCSK7
Gene Alias	LPC, PC7, PC8, SPC7
Gene Description	proprotein convertase subtilisin/kexin type 7
Omim ID	604872
Gene Ontology	Hyperlink

Gene Summary	The protein encoded by this gene belongs to the subtilisin-like proprotein convertase family. The members of this family are proprotein convertases that process latent precursor proteins into their biologically active products. This encoded protein is a calcium-dependent serine endoprotease. It is structurally related to its family members, PACE and PACE4. This protein is concentrated in the trans-Golgi network, associated with the membranes, and is not secreted. It can process proalbumin and is thought to be responsible for the activation of HIV envelope glycoproteins gp160 and gp140. This gene has been implicated in the transcriptional regulation of housekeeping genes. Multiple alternatively spliced transcripts are described for this gene but their full length nature is not yet known. Downstream of this gene's map location at 11q23-q24, nucleotides that match part of the gene's 3' end are duplicated and inverted. A translocation breakpoint associated with lymphoma occurs between this gene and its inverted counterpart. [provided by RefSeq]
--------------	--

Other Designations

lymphoma proprotein convertase|prohormone convertase 8, subtilisin-like|prohormone convertase PC7|proprotein convertase PC7|proprotein convertase subtilisin/kexin type 7 precursor variant 1|subtilisin/kexin-like protease PC7
