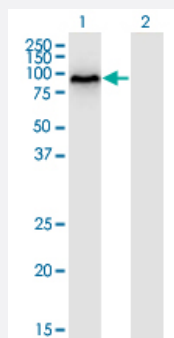


# DYRK1B monoclonal antibody (M10), clone 2E8

Catalog # H00009149-M10

Size 100 ug

## Applications

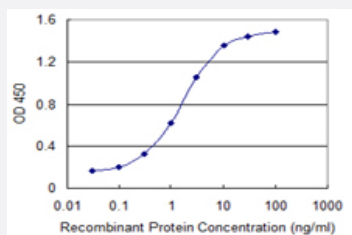


### Western Blot (Transfected lysate)

Western Blot analysis of DYRK1B expression in transfected 293T cell line by DYRK1B monoclonal antibody (M10), clone 2E8.

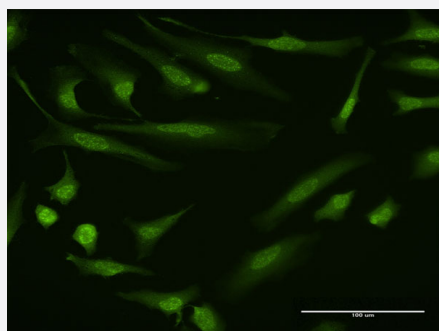
Lane 1: DYRK1B transfected lysate (Predicted MW: 69.2 KDa).

Lane 2: Non-transfected lysate.



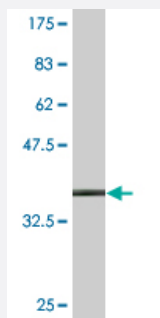
### Sandwich ELISA (Recombinant protein)

Detection limit for recombinant GST tagged DYRK1B is 0.03 ng/ml as a capture antibody.



### Immunofluorescence

Immunofluorescence of monoclonal antibody to DYRK1B on HeLa cell .  
[antibody concentration 10 ug/ml]



Western Blot detection against Immunogen (35.64 KDa) .

## Specification

<b>Product Description</b>	Mouse monoclonal antibody raised against a partial recombinant DYRK1B.
<b>Immunogen</b>	DYRK1B (AAH25291, 479 a.a. ~ 569 a.a) partial recombinant protein with GST tag. MW of the GST tag alone is 26 KDa.
<b>Sequence</b>	DNRTYRYSNRYCGGPGPPITDCEMNSPQVPPSQPLRPWAGGDVPHKTHQAPASASSLPGTGAQLPPQPRYLGRPPSPTSPPPPELMDVSLV
<b>Host</b>	Mouse
<b>Reactivity</b>	Human
<b>Interspecies Antigen Sequence</b>	Mouse (97); Rat (91)
<b>Isotype</b>	IgG2a Kappa
<b>Quality Control Testing</b>	Antibody Reactive Against Recombinant Protein. Western Blot detection against Immunogen (35.64 KDa) .
<b>Storage Buffer</b>	In 1x PBS, pH 7.4
<b>Storage Instruction</b>	Store at -20°C or lower. Aliquot to avoid repeated freezing and thawing.

## Applications

### ● Western Blot (Transfected lysate)

Western Blot analysis of DYRK1B expression in transfected 293T cell line by DYRK1B monoclonal antibody (M10), clone 2E8.

Lane 1: DYRK1B transfected lysate (Predicted MW: 69.2 KDa).

Lane 2: Non-transfected lysate.

[Protocol Download](#)

- Western Blot (Recombinant protein)

[Protocol Download](#)

- Sandwich ELISA (Recombinant protein)

Detection limit for recombinant GST tagged DYRK1B is 0.03 ng/ml as a capture antibody.

[Protocol Download](#)

- ELISA

- Immunofluorescence

Immunofluorescence of monoclonal antibody to DYRK1B on HeLa cell . [antibody concentration 10 ug/ml]

## Gene Info — DYRK1B

Entrez GeneID [9149](#)

GeneBank Accession# [BC025291](#)

Protein Accession# [AAH25291](#)

Gene Name DYRK1B

Gene Alias MIRK

Gene Description dual-specificity tyrosine-(Y)-phosphorylation regulated kinase 1B

Omim ID [604556](#)

Gene Ontology [Hyperlink](#)

**Gene Summary** DYRK1B is a member of the DYRK family of protein kinases. DYRK1B contains a bipartite nuclear localization signal and is found mainly in muscle and testis. The protein is proposed to be involved in the regulation of nuclear functions. Three isoforms of DYRK1B have been identified differing in the presence of two alternatively spliced exons within the catalytic domain. [provided by RefSeq]

**Other Designations** minibrain-related kinase