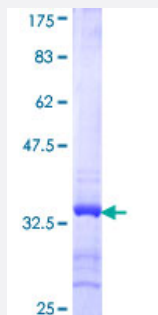


SYNGR2 (Human) Recombinant Protein (Q01)

Catalog # H00009144-Q01

Size 25 ug, 10 ug

Applications



Specification

Product Description	Human SYNGR2 partial ORF (NP_004701, 168 a.a. - 224 a.a.) recombinant protein with GST-tag at N-terminal.
Sequence	QRYKAGVDDFIQNYVDPTDPNTAYASYPGASVDNYQQPPFTQNAETTEGYQPPPVY
Host	Wheat Germ (in vitro)
Theoretical MW (kDa)	32.01
Preparation Method	in vitro wheat germ expression system
Purification	Glutathione Sepharose 4 Fast Flow
Quality Control Testing	12.5% SDS-PAGE Stained with Coomassie Blue.
Storage Buffer	50 mM Tris-HCl, 10 mM reduced Glutathione, pH=8.0 in the elution buffer.
Storage Instruction	Store at -80°C. Aliquot to avoid repeated freezing and thawing.
Note	Best use within three months from the date of receipt of this protein.

Applications

- Enzyme-linked Immunoabsorbent Assay
- Western Blot (Recombinant protein)
- Antibody Production
- Protein Array

Gene Info — SYNGR2

Entrez GeneID [9144](#)

GeneBank Accession# [NM_004710](#)

Protein Accession# [NP_004701](#)

Gene Name SYNGR2

Gene Alias MGC102914

Gene Description synaptogyrin 2

Omim ID [603926](#)

Gene Ontology [Hyperlink](#)

Gene Summary This gene encodes an integral membrane protein containing four transmembrane regions and a C-terminal cytoplasmic tail that is tyrosine phosphorylated. The exact function of this protein is unclear, but studies of a similar rat protein suggest that it may play a role in regulating membrane traffic in non-neuronal cells. The gene belongs to the synaptogyrin gene family. [provided by RefSeq]

Other Designations cellugyrin