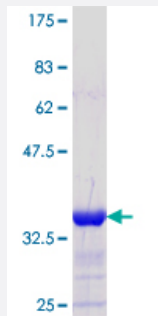


CBFA2T2 (Human) Recombinant Protein (Q01)

Catalog # H00009139-Q01

Size 25 ug, 10 ug

Applications



Specification

Product Description	Human CBFA2T2 partial ORF (NP_001028171.1, 201 a.a. - 304 a.a.) recombinant protein with GS T-tag at N-terminal.
Sequence	LLLNTSIASPADSSELLMEVHGNGKRPSPERREENSFDRDTIAPEPPAKRVCTISPAPRHSPALTV PLMNPGGQFHPTPPPLQHYTLEDIATSHLYREPKNMLE
Host	Wheat Germ (in vitro)
Theoretical MW (kDa)	37.18
Interspecies Antigen Sequence	Mouse (95); Rat (94)
Preparation Method	in vitro wheat germ expression system
Purification	Glutathione Sepharose 4 Fast Flow
Quality Control Testing	12.5% SDS-PAGE Stained with Coomassie Blue.
Storage Buffer	50 mM Tris-HCl, 10 mM reduced Glutathione, pH=8.0 in the elution buffer.
Storage Instruction	Store at -80°C. Aliquot to avoid repeated freezing and thawing.
Note	Best use within three months from the date of receipt of this protein.

Applications

- Enzyme-linked Immunoabsorbent Assay
- Western Blot (Recombinant protein)
- Antibody Production
- Protein Array

Gene Info — CBFA2T2

Entrez GeneID [9139](#)

GeneBank Accession# [NM_001032999](#)

Protein Accession# [NP_001028171.1](#)

Gene Name CBFA2T2

Gene Alias DKFZp313F2116, EHT, MTGR1, ZMYND3

Gene Description core-binding factor, runt domain, alpha subunit 2; translocated to, 2

Omim ID [603672](#)

Gene Ontology [Hyperlink](#)

Gene Summary In acute myeloid leukemia, especially in the M2 subtype, the t(8;21)(q22;q22) translocation is one of the most frequent karyotypic abnormalities. The translocation produces a chimeric gene made up of the 5'-region of the RUNX1 (AML1) gene fused to the 3'-region of the CBFA2T1 (MTG8) gene. The chimeric protein is thought to associate with the nuclear corepressor/histone deacetylase complex to block hematopoietic differentiation. The protein encoded by this gene binds to the AML1-MTG8 complex and may be important in promoting leukemogenesis. Several transcript variants are thought to exist for this gene, but the full-length nature of only three have been described. [provided by RefSeq]

Other Designations ETO homolog on chromosome 20|MTG8-like protein|OTTHUMP00000030653|myeloid translocation gene-related protein 1