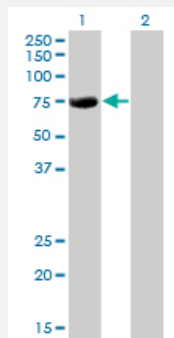


CBFA2T2 monoclonal antibody (M15), clone 2C10

Catalog # H00009139-M15

Size 100 ug

Applications

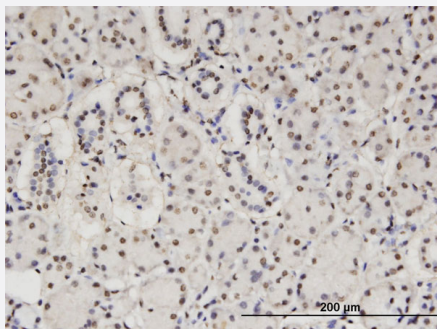


Western Blot (Transfected lysate)

Western Blot analysis of CBFA2T2 expression in transfected 293T cell line by CBFA2T2 monoclonal antibody (M15), clone 2C10.

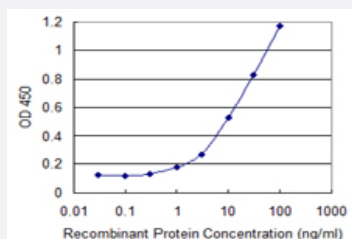
Lane 1: CBFA2T2 transfected lysate(63.9 KDa).

Lane 2: Non-transfected lysate.



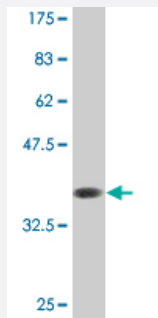
Immunohistochemistry (Formalin/PFA-fixed paraffin-embedded sections)

Immunoperoxidase of monoclonal antibody to CBFA2T2 on formalin-fixed paraffin-embedded human salivary gland. [antibody concentration 3 ug/ml]



Sandwich ELISA (Recombinant protein)

Detection limit for recombinant GST tagged CBFA2T2 is 0.3 ng/ml as a capture antibody.



Western Blot detection against Immunogen (37.18 KDa) .

Specification

Product Description	Mouse monoclonal antibody raised against a partial recombinant CBFA2T2.
Immunogen	CBFA2T2 (NP_001028171.1, 201 a.a. ~ 304 a.a) partial recombinant protein with GST tag. MW of the GST tag alone is 26 KDa.
Sequence	LLLNTSIASPADSSELLMEVHGNGKRPSPERREENSFDRDTIAPEPPAKRVCTISPAPRHSPALTV PLMNPGGQFHPTPPPLQHYTLEDIATSHLYREPKNMLE
Host	Mouse
Reactivity	Human
Interspecies Antigen Sequence	Mouse (95); Rat (94)
Isotype	IgG2b Kappa
Quality Control Testing	Antibody Reactive Against Recombinant Protein. Western Blot detection against Immunogen (37.18 KDa) .
Storage Buffer	In 1x PBS, pH 7.4
Storage Instruction	Store at -20°C or lower. Aliquot to avoid repeated freezing and thawing.

Applications

- Western Blot (Transfected lysate)

Western Blot analysis of CBFA2T2 expression in transfected 293T cell line by CBFA2T2 monoclonal antibody (M15), clone 2C10.

Lane 1: CBFA2T2 transfected lysate(63.9 KDa).

Lane 2: Non-transfected lysate.

[Protocol Download](#)

- Western Blot (Recombinant protein)

[Protocol Download](#)

- Immunohistochemistry (Formalin/PFA-fixed paraffin-embedded sections)

Immunoperoxidase of monoclonal antibody to CBFA2T2 on formalin-fixed paraffin-embedded human salivary gland. [antibody concentration 3 ug/ml]

[Protocol Download](#)

- Sandwich ELISA (Recombinant protein)

Detection limit for recombinant GST tagged CBFA2T2 is 0.3 ng/ml as a capture antibody.

[Protocol Download](#)

- ELISA

Gene Info — CBFA2T2

Entrez GeneID [9139](#)

GeneBank Accession# [NM_001032999](#)

Protein Accession# [NP_001028171.1](#)

Gene Name CBFA2T2

Gene Alias DKFZp313F2116, EHT, MTGR1, ZMYND3

Gene Description core-binding factor, runt domain, alpha subunit 2; translocated to, 2

Omim ID [603672](#)

Gene Ontology [Hyperlink](#)

Gene Summary

In acute myeloid leukemia, especially in the M2 subtype, the t(8;21)(q22;q22) translocation is one of the most frequent karyotypic abnormalities. The translocation produces a chimeric gene made up of the 5'-region of the RUNX1 (AML1) gene fused to the 3'-region of the CBFA2T1 (MTG8) gene. The chimeric protein is thought to associate with the nuclear corepressor/histone deacetylase complex to block hematopoietic differentiation. The protein encoded by this gene binds to the AML1-MTG8 complex and may be important in promoting leukemogenesis. Several transcript variants are thought to exist for this gene, but the full-length nature of only three have been described. [provided by RefSeq]

Other Designations ETO homolog on chromosome 20|MTG8-like protein|OTTHUMP00000030653|myeloid translocation gene-related protein 1