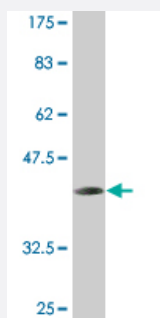


CBFA2T2 monoclonal antibody (M06), clone 2H8

Catalog # H00009139-M06

Size 100 ug

Applications



Western Blot detection against Immunogen (37.18 KDa) .

Specification

Product Description	Mouse monoclonal antibody raised against a partial recombinant CBFA2T2.
Immunogen	CBFA2T2 (NP_001028171.1, 201 a.a. ~ 304 a.a) partial recombinant protein with GST tag. MW of the GST tag alone is 26 KDa.
Sequence	LLLNTSIASPADSSELLMEVHGNGKRPSPERREENSFDRDTIAPEPPAKRVCTISPAPRHSPALTV PLMNPGGQFHPTPPPLQHYLTEDIATSHLYREPKNMLE
Host	Mouse
Reactivity	Human
Interspecies Antigen Sequence	Mouse (95); Rat (94)
Isotype	IgG2b Kappa
Quality Control Testing	Antibody Reactive Against Recombinant Protein. Western Blot detection against Immunogen (37.18 KDa) .
Storage Buffer	In 1x PBS, pH 7.4
Storage Instruction	Store at -20°C or lower. Aliquot to avoid repeated freezing and thawing.

Applications

- Western Blot (Recombinant protein)

[Protocol Download](#)

- ELISA

Gene Info — CBFA2T2

Entrez GeneID	9139
GeneBank Accession#	NM_001032999
Protein Accession#	NP_001028171.1
Gene Name	CBFA2T2
Gene Alias	DKFZp313F2116, EHT, MTGR1, ZMYND3
Gene Description	core-binding factor, runt domain, alpha subunit 2; translocated to, 2
Omim ID	603672
Gene Ontology	Hyperlink
Gene Summary	In acute myeloid leukemia, especially in the M2 subtype, the t(8;21)(q22;q22) translocation is one of the most frequent karyotypic abnormalities. The translocation produces a chimeric gene made up of the 5'-region of the RUNX1 (AML1) gene fused to the 3'-region of the CBFA2T1 (MTG8) gene. The chimeric protein is thought to associate with the nuclear corepressor/histone deacetylase complex to block hematopoietic differentiation. The protein encoded by this gene binds to the AML1-MTG8 complex and may be important in promoting leukemogenesis. Several transcript variants are thought to exist for this gene, but the full-length nature of only three have been described. [provided by RefSeq]
Other Designations	ETO homolog on chromosome 20 MTG8-like protein OTTHUMP00000030653 myeloid translocation gene-related protein 1