

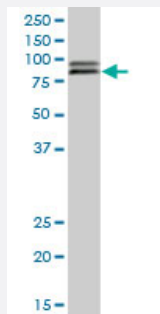
MaxPab®

# CBFA2T2 purified MaxPab mouse polyclonal antibody (B01P)

Catalog # H00009139-B01P

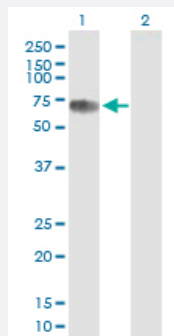
Size 50 ug

## Applications



### Western Blot (Tissue lysate)

CBFA2T2 MaxPab polyclonal antibody. Western Blot analysis of CBFA2T2 expression in human colon.

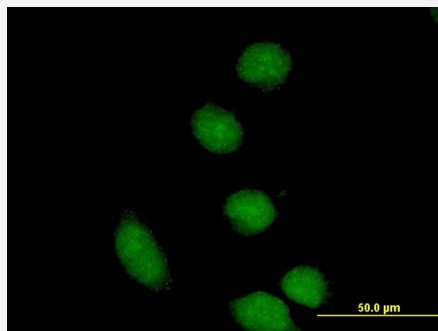


### Western Blot (Transfected lysate)

Western Blot analysis of CBFA2T2 expression in transfected 293T cell line ([H00009139-T01](#)) by CBFA2T2 MaxPab polyclonal antibody.

Lane 1: CBFA2T2 transfected lysate(63.25 KDa).

Lane 2: Non-transfected lysate.



### Immunofluorescence

Immunofluorescence of purified MaxPab antibody to CBFA2T2 on HeLa cell. [antibody concentration 10 ug/ml]

## Specification

### Product Description

Mouse polyclonal antibody raised against a full-length human CBFA2T2 protein.

<b>Immunogen</b>	CBFA2T2 (NP_001034798.1, 1 a.a. ~ 575 a.a) full-length human protein.
<b>Sequence</b>	MPGSPVEVKIQSRSSPPTMPPLPPINPGGPRPVSFTPTALSNGINHSPPTLNGAPSPPPQRFSSNGP ASSTSSALTNQQLPATCGARQLSKLKRFLTTLQQFGNDISPEIGEKVRTLVLALVNSTVTIEEFHCK LQEATNFPLRPFVIPFLKANLPLLQRELLHCARAAKQTPSQYLAQHEHLLNTSIASPADSSELLME VHGNGKRPSPERREENSFDRDTIAPEPPAKRVCTISPAPRHSPALTVPLMNPGGQFHPTPPPLQ HYTLEDIATSHLYREPKNMLEHREVRDRHSLGLNGGYQDELVDHRLTEREWADEWKHLDHALN CIMEMVEKTRRSMAYLRRCQESDREELNYWKRRYNENTELRKTGTTELVSQRHSPGSADSLSDND SQREFNSRPGTGYVPVEFWKKTEEAVNKVKIQAMSEVQKAVAEAEQKAFEVIATERARMEQTIA DVKRQAAEDAFVLVINEQEESTENCWNCGRKASETCSGCNIARYCGSFCQHKDWERHHRLCGQN LHGQSPHGGQGRPLLPGVGRGSSARSADCSVPSPALDKTSATTSRSSPTASVTAIDTNGL
<b>Host</b>	Mouse
<b>Reactivity</b>	Human
<b>Interspecies Antigen Sequence</b>	Mouse (95); Rat (94)
<b>Quality Control Testing</b>	Antibody reactive against mammalian transfected lysate.
<b>Storage Buffer</b>	In 1x PBS, pH 7.4
<b>Storage Instruction</b>	Store at -20°C or lower. Aliquot to avoid repeated freezing and thawing.

## Applications

- Western Blot (Tissue lysate)

CBFA2T2 MaxPab polyclonal antibody. Western Blot analysis of CBFA2T2 expression in human colon.

[Protocol Download](#)

- Western Blot (Transfected lysate)

Western Blot analysis of CBFA2T2 expression in transfected 293T cell line ([H00009139-T01](#)) by CBFA2T2 MaxPab polyclonal antibody.

Lane 1: CBFA2T2 transfected lysate(63.25 KDa).

Lane 2: Non-transfected lysate.

[Protocol Download](#)

- Immunofluorescence

Immunofluorescence of purified MaxPab antibody to CBFA2T2 on HeLa cell. [antibody concentration 10 ug/ml]

## Gene Info — CBFA2T2

Entrez GeneID	<a href="#">9139</a>
GeneBank Accession#	<a href="#">NM_001039709.1</a>
Protein Accession#	<a href="#">NP_001034798.1</a>
Gene Name	CBFA2T2
Gene Alias	DKFZp313F2116, EHT, MTGR1, ZMYND3
Gene Description	core-binding factor, runt domain, alpha subunit 2; translocated to, 2
Omim ID	<a href="#">603672</a>
Gene Ontology	<a href="#">Hyperlink</a>
Gene Summary	<p>In acute myeloid leukemia, especially in the M2 subtype, the t(8;21)(q22;q22) translocation is one of the most frequent karyotypic abnormalities. The translocation produces a chimeric gene made up of the 5'-region of the RUNX1 (AML1) gene fused to the 3'-region of the CBFA2T1 (MTG8) gene. The chimeric protein is thought to associate with the nuclear corepressor/histone deacetylase complex to block hematopoietic differentiation. The protein encoded by this gene binds to the AML1-MTG8 complex and may be important in promoting leukemogenesis. Several transcript variants are thought to exist for this gene, but the full-length nature of only three have been described. [provided by RefSeq]</p>
Other Designations	ETO homolog on chromosome 20 MTG8-like protein OTTHUMP00000030653 myeloid translocation gene-related protein 1