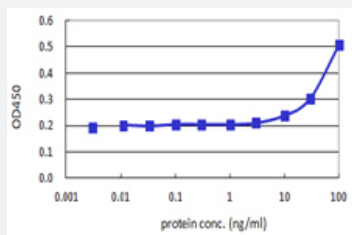


# CBFA2T2 (Human) Matched Antibody Pair

Catalog # H00009139-AP41

Size 1 Set

## Applications



Sandwich ELISA detection sensitivity ranging from 10 ng/ml to 100 ng/ml.

## Specification

<b>Product Description</b>	This antibody pair set comes with a matched antibody pair to detect and quantify the protein level of human CBFA2T2.
<b>Reactivity</b>	Human
<b>Interspecies Antigen Sequence</b>	Mouse (95); Rat (94)
<b>Quality Control Testing</b>	Standard curve using recombinant protein ( H00009139-P01 ) as an analyte. Sandwich ELISA detection sensitivity ranging from 10 ng/ml to 100 ng/ml.
<b>Supplied Product</b>	Antibody pair set content: 1. Capture antibody: mouse monoclonal anti-CBFA2T2, IgG2a Kappa (100 ug) 2. Detection antibody: biotinylated mouse monoclonal anti-CBFA2T2, IgG2a Kappa (50 ug) *Reagents are sufficient for at least 3-5 x 96 well plates using recommended protocols.
<b>Storage Instruction</b>	Store reagents of the antibody pair set at -20°C or lower. Please aliquot to avoid repeated freeze thaw cycle. Reagents should be returned to -20°C storage immediately after use.

## Applications

- ELISA Pair (Recombinant protein)

[Protocol Download](#)

## Gene Info — CBFA2T2

**Entrez GeneID** [9139](#)

**Gene Name** CBFA2T2

**Gene Alias** DKFZp313F2116, EHT, MTGR1, ZMYND3

**Gene Description** core-binding factor, runt domain, alpha subunit 2; translocated to, 2

**Omim ID** [603672](#)

**Gene Ontology** [Hyperlink](#)

**Gene Summary** In acute myeloid leukemia, especially in the M2 subtype, the t(8;21)(q22;q22) translocation is one of the most frequent karyotypic abnormalities. The translocation produces a chimeric gene made up of the 5'-region of the RUNX1 (AML1) gene fused to the 3'-region of the CBFA2T1 (MTG8) gene. The chimeric protein is thought to associate with the nuclear corepressor/histone deacetylase complex to block hematopoietic differentiation. The protein encoded by this gene binds to the AML1-MTG8 complex and may be important in promoting leukemogenesis. Several transcript variants are thought to exist for this gene, but the full-length nature of only three have been described. [provided by RefSeq]

**Other Designations** ETO homolog on chromosome 20|MTG8-like protein|OTTHUMP00000030653|myeloid translocation gene-related protein 1