

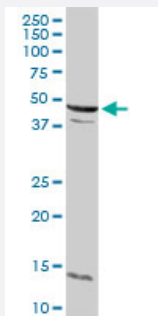
MaxPab®

CCNE2 purified MaxPab rabbit polyclonal antibody (D01P)

Catalog # H00009134-D01P

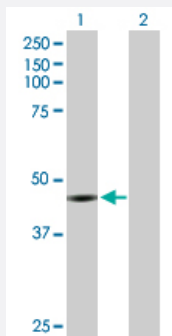
Size 100 ug

Applications



Western Blot (Tissue lysate)

CCNE2 MaxPab rabbit polyclonal antibody. Western Blot analysis of CCNE2 expression in mouse liver.



Western Blot (Transfected lysate)

Western Blot analysis of CCNE2 expression in transfected 293T cell line ([H00009134-T03](#)) by CCNE2 MaxPab polyclonal antibody.

Lane 1: CCNE2 transfected lysate(46.80 KDa).

Lane 2: Non-transfected lysate.

Specification

Product Description

Rabbit polyclonal antibody raised against a full-length human CCNE2 protein.

Immunogen

CCNE2 (NP_477097.1, 1 a.a. ~ 404 a.a) full-length human protein.

Sequence

MSRRSSRLQAKQQPQPSQTESPQEAQIIQAKKRKTTQDVKKRREEVTKKHQYEIRNCWPPVLSG
GISPCIIETPHKEIGTSDFSRFTNYRFKNLFINPSPLPDLWSGCSKEVWLNMLKKESRYVHDKHFE
VLHSDLEPQMRSILLDWLLEVCEVYTLHRETFYLAQDFFDRFMLTQKDINKNMLQLIGITSLFIASKL
EEIYAPKLQEFAYVTDGACSEEDILRMELIILKALKWELCPVTIISWLNFLQVDALKDAPKVLPPQY
SQETFIQIAQLLDLCILAIDSLEFQYRILTAAALCHFTSIEVVKKASGLEWDSISECVDWMVPFVN
KSTSPVKLKTFFKIPMEDRHNIQTHTNYLAMLEEVNYINTFRKGGQLSPVCNGGIMTPPKSTEKPPG
KH

Host	Rabbit
Reactivity	Human, Mouse
Interspecies Antigen Sequence	Mouse (92); Rat (92)
Quality Control Testing	Antibody reactive against mammalian transfected lysate.
Storage Buffer	In 1x PBS, pH 7.4
Storage Instruction	Store at -20°C or lower. Aliquot to avoid repeated freezing and thawing.

Applications

- Western Blot (Tissue lysate)

CCNE2 MaxPab rabbit polyclonal antibody. Western Blot analysis of CCNE2 expression in mouse liver.

[Protocol Download](#)

- Western Blot (Transfected lysate)

Western Blot analysis of CCNE2 expression in transfected 293T cell line ([H00009134-T03](#)) by CCNE2 MaxPab polyclonal antibody.

Lane 1: CCNE2 transfected lysate(46.80 KDa).

Lane 2: Non-transfected lysate.

[Protocol Download](#)

Gene Info — CCNE2

Entrez GeneID	9134
GeneBank Accession#	NM_057749
Protein Accession#	NP_477097.1
Gene Name	CCNE2
Gene Alias	CYCE2
Gene Description	cyclin E2
Omim ID	603775
Gene Ontology	Hyperlink

Gene Summary

The protein encoded by this gene belongs to the highly conserved cyclin family, whose members are characterized by a dramatic periodicity in protein abundance through the cell cycle. Cyclins function as regulators of CDK kinases. Different cyclins exhibit distinct expression and degradation patterns which contribute to the temporal coordination of each mitotic event. This cyclin forms a complex with and functions as a regulatory subunit of CDK2. This cyclin has been shown to specifically interact with CIP/KIP family of CDK inhibitors, and plays a role in cell cycle G1/S transition. The expression of this gene peaks at the G1-S phase and exhibits a pattern of tissue specificity distinct from that of cyclin E1. A significantly increased expression level of this gene was observed in tumor-derived cells. [provided by RefSeq]

Other Designations

G1/S-specific cyclin E2

Pathway

- [Cell cycle](#)
- [p53 signaling pathway](#)
- [Pathways in cancer](#)
- [Prostate cancer](#)
- [Small cell lung cancer](#)

Disease

- [Genetic Predisposition to Disease](#)
- [Ovarian Neoplasms](#)