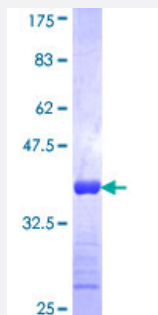


# K6HF (Human) Recombinant Protein (Q01)

Catalog # H00009119-Q01

Size 25 ug, 10 ug

## Applications



## Specification

<b>Product Description</b>	Human K6HF partial ORF ( NP_004684, 141 a.a. - 240 a.a.) recombinant protein with GST-tag at N-terminal.
<b>Sequence</b>	TIQVRAEEREQIKTLNNKFASFIDKVRFLQQNKVLETKWALLQEQQSRTVRQNLEPLFDSYTSE LRRQLESITTERGRLEAELRNMQDVVEDFKVRYE
<b>Host</b>	Wheat Germ (in vitro)
<b>Theoretical MW (kDa)</b>	36.74
<b>Interspecies Antigen Sequence</b>	Mouse (84); Rat (81)
<b>Preparation Method</b>	<a href="#">in vitro wheat germ expression system</a>
<b>Purification</b>	Glutathione Sepharose 4 Fast Flow
<b>Quality Control Testing</b>	12.5% SDS-PAGE Stained with Coomassie Blue.
<b>Storage Buffer</b>	50 mM Tris-HCl, 10 mM reduced Glutathione, pH=8.0 in the elution buffer.
<b>Storage Instruction</b>	Store at -80°C. Aliquot to avoid repeated freezing and thawing.
<b>Note</b>	Best use within three months from the date of receipt of this protein.

## Applications

- Enzyme-linked Immunoabsorbent Assay
- Western Blot (Recombinant protein)
- Antibody Production
- Protein Array

## Gene Info — KRT75

Entrez GeneID [9119](#)

GeneBank Accession# [NM\\_004693](#)

Protein Accession# [NP\\_004684](#)

Gene Name KRT75

Gene Alias K6HF, KB18, PFB

Gene Description keratin 75

Omim ID [609025](#)

Gene Ontology [Hyperlink](#)

**Gene Summary** This gene is a member of the type II keratin family clustered on the long arm of chromosome 12. Type I and type II keratins heteropolymerize to form intermediate-sized filaments in the cytoplasm of epithelial cells. This gene is expressed in the companion layer, upper germinative matrix region of the hair follicle, and medulla of the hair shaft. The encoded protein plays an essential role in hair and nail formation. Variations in this gene have been associated with the hair disorders pseudofolliculitis barbae (PFB) and loose anagen hair syndrome (LAHS). [provided by RefSeq]

**Other Designations** cytokeratin type III|cytokeratin-75|keratin-6 hair follicle|type II keratin-18