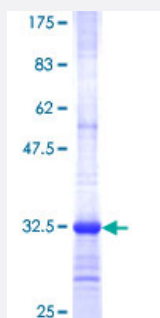


SEC22L3 (Human) Recombinant Protein (Q01)

Catalog # H00009117-Q01

Size 25 ug, 10 ug

Applications



Specification

| | |
|--------------------------------|--|
| Product Description | Human SEC22L3 partial ORF (NP_116752, 3 a.a. - 68 a.a.) recombinant protein with GST-tag at N-terminal. |
| Sequence | VIFFACVVRVRDGLPLSASTDFYHTQDFLEWRRRLKSLALRLAQYPGRGSAEGCDFSIHFSSFGDV |
| Host | Wheat Germ (in vitro) |
| Theoretical MW (kDa) | 33 |
| Preparation Method | in vitro wheat germ expression system |
| Purification | Glutathione Sepharose 4 Fast Flow |
| Quality Control Testing | 12.5% SDS-PAGE Stained with Coomassie Blue. |
| Storage Buffer | 50 mM Tris-HCl, 10 mM reduced Glutathione, pH=8.0 in the elution buffer. |
| Storage Instruction | Store at -80°C. Aliquot to avoid repeated freezing and thawing. |
| Note | Best use within three months from the date of receipt of this protein. |

Applications

- Enzyme-linked Immunoabsorbent Assay
- Western Blot (Recombinant protein)
- Antibody Production
- Protein Array

Gene Info — SEC22C

Entrez GeneID [9117](#)

GeneBank Accession# [NM_032970](#)

Protein Accession# [NP_116752](#)

Gene Name SEC22C

Gene Alias DKFZp761F2321, MGC13261, MGC5373, SEC22L3

Gene Description SEC22 vesicle trafficking protein homolog C (S. cerevisiae)

Omim ID [604028](#)

Gene Ontology [Hyperlink](#)

Gene Summary The protein encoded by this gene is a member of the SEC22 family of vesicle trafficking proteins. It is localized at the endoplasmic reticulum and it is thought to play a role in the early stages of the ER-Golgi protein trafficking. There are two alternatively spliced transcript variants encoding different isoforms described for this gene. [provided by RefSeq]

Other Designations OTTHUMP00000162608|SEC22 vesicle trafficking protein homolog C|SEC22 vesicle trafficking protein-like 3|secretion deficient 22C|vesicle trafficking protein