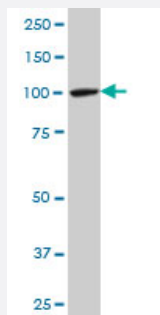


MTA1 monoclonal antibody (M10), clone 1C3

Catalog # H00009112-M10

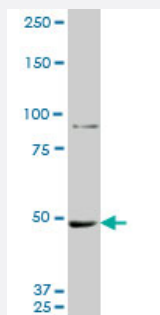
Size 100 ug

Applications



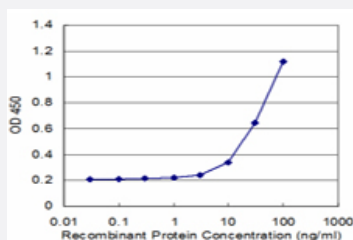
Western Blot (Cell lysate)

MTA1 monoclonal antibody (M10), clone 1C3. Western Blot analysis of MTA1 expression in U-2 OS (Cat # L022V1).



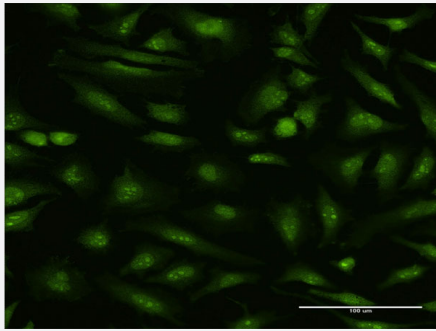
Western Blot (Cell lysate)

MTA1 monoclonal antibody (M10), clone 1C3. Western Blot analysis of MTA1 expression in A-549 (Cat # L025V1).



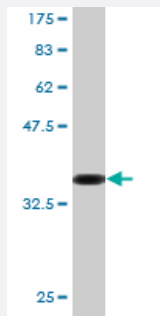
Sandwich ELISA (Recombinant protein)

Detection limit for recombinant GST tagged MTA1 is approximately 3ng/ml as a capture antibody.



Immunofluorescence

Immunofluorescence of monoclonal antibody to MTA1 on HeLa cell . [antibody concentration 10 ug/ml]



Western Blot detection against Immunogen (36.74 KDa) .

Specification

Product Description	Mouse monoclonal antibody raised against a partial recombinant MTA1.
Immunogen	MTA1 (NP_004680, 601 a.a. ~ 700 a.a) partial recombinant protein with GST tag. MW of the GST tag alone is 26 KDa.
Sequence	MPSRGLANHGQTRHMGPSRNLLNGKSYPTKVRLIRGGSLPPVKRRRMNWIDAPDDVFYMATEE TRKIRKLLSSSETKRAARRPYKPIALRQSQUALPPRP
Host	Mouse
Reactivity	Human
Interspecies Antigen Sequence	Mouse (96); Rat (91)
Isotype	IgG2a Kappa
Quality Control Testing	Antibody Reactive Against Recombinant Protein. Western Blot detection against Immunogen (36.74 KDa) .
Storage Buffer	In 1x PBS, pH 7.4
Storage Instruction	Store at -20°C or lower. Aliquot to avoid repeated freezing and thawing.

Applications

- Western Blot (Cell lysate)

MTA1 monoclonal antibody (M10), clone 1C3. Western Blot analysis of MTA1 expression in U-2 OS (Cat # L022V1).

[Protocol Download](#)

- Western Blot (Cell lysate)

MTA1 monoclonal antibody (M10), clone 1C3. Western Blot analysis of MTA1 expression in A-549 (Cat # L025V1).

[Protocol Download](#)

- Western Blot (Recombinant protein)

[Protocol Download](#)

- Sandwich ELISA (Recombinant protein)

Detection limit for recombinant GST tagged MTA1 is approximately 3ng/ml as a capture antibody.

[Protocol Download](#)

- ELISA

- Immunofluorescence

Immunofluorescence of monoclonal antibody to MTA1 on HeLa cell . [antibody concentration 10 ug/ml]

Gene Info — MTA1

Entrez GeneID	9112
GeneBank Accession#	NM_004689
Protein Accession#	NP_004680
Gene Name	MTA1
Gene Alias	-
Gene Description	metastasis associated 1
Omim ID	603526
Gene Ontology	Hyperlink

Gene Summary

This gene encodes a protein that was identified in a screen for genes expressed in metastatic cells, specifically, mammary adenocarcinoma cell lines. Expression of this gene has been correlated with the metastatic potential of at least two types of carcinomas although it is also expressed in many normal tissues. The role it plays in metastasis is unclear. It was initially thought to be the 70kD component of a nucleosome remodeling deacetylase complex, NuRD, but it is more likely that this component is a different but very similar protein. These two proteins are so closely related, though, that they share the same types of domains. These domains include two DNA binding domains, a dimerization domain, and a domain commonly found in proteins that methylate DNA. The profile and activity of this gene product suggest that it is involved in regulating transcription and that this may be accomplished by chromatin remodeling. [provided by RefSeq]

Other Designations

metastasis associated gene 1 protein|metastasis associated protein

Disease

- [Breast cancer](#)
- [Breast Neoplasms](#)
- [Genetic Predisposition to Disease](#)
- [Neoplasm Metastasis](#)
- [Neoplasms](#)
- [Obesity](#)