

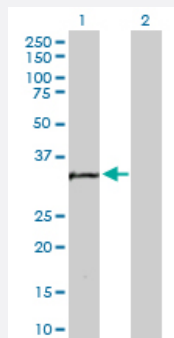
MaxPab®

MTA1 purified MaxPab rabbit polyclonal antibody (D01P)

Catalog # H00009112-D01P

Size 100 ug

Applications

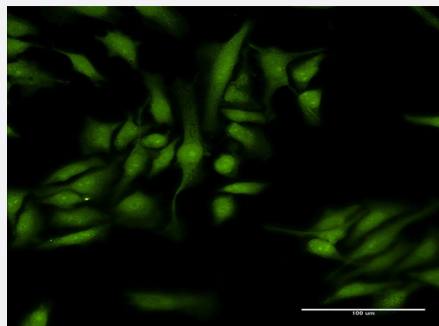


Western Blot (Transfected lysate)

Western Blot analysis of MTA1 expression in transfected 293T cell line ([H00009112-T02](#)) by MTA1 MaxPab polyclonal antibody.

Lane 1: MTA1 transfected lysate(28.7 KDa).

Lane 2: Non-transfected lysate.



Immunofluorescence

Immunofluorescence of purified MaxPab antibody to MTA1 on HeLa cell. [antibody concentration 30 ug/ml]

Specification

Product Description

Rabbit polyclonal antibody raised against a full-length human MTA1 protein.

Immunogen

MTA1 (AAH06177.1, 1 a.a. ~ 255 a.a) full-length human protein.

Sequence

MKTRQAFYLHTTKLTRIARRLCREILRPWHAARHPYLPINSAAIKAECTARLPEASQSPLVLKQAVR
KPLEAVLRYLETHPRPPKPDVKSVSLSLTPAKVAPVINNGSPTILGKRSYEQHNGVDGNMK
KRLLMPSRGTYLGLANHGQTRHMGPSRNLLNGKSYPTKVRIRGGSLPPVKRRRMNWIDAPDDV
FYMATEETRKIRKLLSSSETKRAARRPYKPIALRQSQUALPPRPPPPAPVNDEPMIED

Host

Rabbit

Reactivity

Human

| | |
|-------------------------------|--|
| Interspecies Antigen Sequence | Mouse (96); Rat (91) |
| Quality Control Testing | Antibody reactive against mammalian transfected lysate. |
| Storage Buffer | In 1x PBS, pH 7.4 |
| Storage Instruction | Store at -20°C or lower. Aliquot to avoid repeated freezing and thawing. |

Applications

- Western Blot (Transfected lysate)

Western Blot analysis of MTA1 expression in transfected 293T cell line ([H00009112-T02](#)) by MTA1 MaxPab polyclonal antibody.

Lane 1: MTA1 transfected lysate(28.7 KDa).

Lane 2: Non-transfected lysate.

[Protocol Download](#)

- Immunofluorescence

Immunofluorescence of purified MaxPab antibody to MTA1 on HeLa cell. [antibody concentration 30 ug/ml]

Gene Info — MTA1

| | |
|---------------------|----------------------------|
| Entrez GeneID | 9112 |
| GeneBank Accession# | BC006177.1 |
| Protein Accession# | AAH06177.1 |
| Gene Name | MTA1 |
| Gene Alias | - |
| Gene Description | metastasis associated 1 |
| Omim ID | 603526 |
| Gene Ontology | Hyperlink |

Gene Summary

This gene encodes a protein that was identified in a screen for genes expressed in metastatic cells, specifically, mammary adenocarcinoma cell lines. Expression of this gene has been correlated with the metastatic potential of at least two types of carcinomas although it is also expressed in many normal tissues. The role it plays in metastasis is unclear. It was initially thought to be the 70kD component of a nucleosome remodeling deacetylase complex, NuRD, but it is more likely that this component is a different but very similar protein. These two proteins are so closely related, though, that they share the same types of domains. These domains include two DNA binding domains, a dimerization domain, and a domain commonly found in proteins that methylate DNA. The profile and activity of this gene product suggest that it is involved in regulating transcription and that this may be accomplished by chromatin remodeling. [provided by RefSeq]

Other Designations

metastasis associated gene 1 protein|metastasis associated protein

Disease

- [Breast cancer](#)
- [Breast Neoplasms](#)
- [Genetic Predisposition to Disease](#)
- [Neoplasm Metastasis](#)
- [Neoplasms](#)
- [Obesity](#)