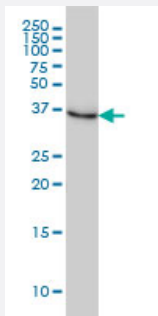


NMI monoclonal antibody (M01), clone 9D8

Catalog # H00009111-M01

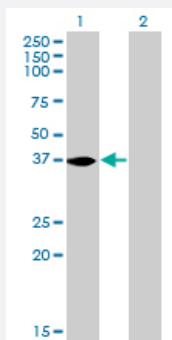
Size 100 ug

Applications



Western Blot (Cell lysate)

NMI monoclonal antibody (M01), clone 9D8 Western Blot analysis of NMI expression in HeLa (Cat # L013V1).

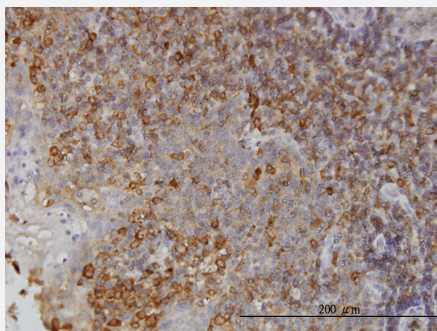


Western Blot (Transfected lysate)

Western Blot analysis of NMI expression in transfected 293T cell line by NMI monoclonal antibody (M01), clone 9D8.

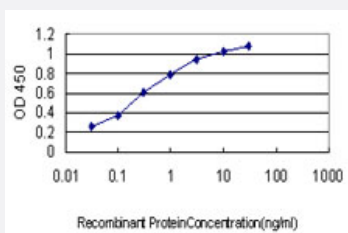
Lane 1: NMI transfected lysate(35.1 KDa).

Lane 2: Non-transfected lysate.



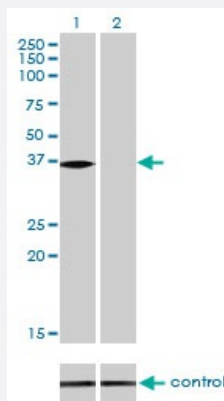
Immunohistochemistry (Formalin/PFA-fixed paraffin-embedded sections)

Immunoperoxidase of monoclonal antibody to NMI on formalin-fixed paraffin-embedded human tonsil. [antibody concentration 3 ug/ml]



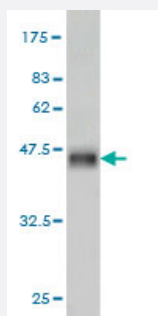
Sandwich ELISA (Recombinant protein)

Detection limit for recombinant GST tagged NMI is approximately 0.03ng/ml as a capture antibody.



RNAi Knockdown (Antibody validated)

Western blot analysis of NMI over-expressed 293 cell line, cotransfected with NMI Validated Chimera RNAi (Cat # H00009111-R01V) (Lane 2) or non-transfected control (Lane 1). Blot probed with NMI monoclonal antibody (M01), clone 9D8 (Cat # H00009111-M01). GAPDH (36.1 kDa) used as specificity and loading control.



Western Blot detection against Immunogen (36.74 KDa) .

Specification

Product Description	Mouse monoclonal antibody raised against a partial recombinant NMI.
Immunogen	NMI (AAH01268, 1 a.a. ~ 100 a.a) partial recombinant protein with GST tag. MW of the GST tag alone is 26 KDa.
Sequence	MEADKDDTQQILKEHSPDEFIKDEQNKGLIDEITKKNIQLKKEIQKLETQLQEATKEFQIKEDIPETKM KFLSVETPENDSQLSNISCSFQVSSKVPYEI
Host	Mouse
Reactivity	Human
Interspecies Antigen Sequence	Mouse (64); Rat (67)
Isotype	IgG2b Kappa
Quality Control Testing	Antibody Reactive Against Recombinant Protein. Western Blot detection against Immunogen (36.74 KDa) .
Storage Buffer	In 1x PBS, pH 7.4
Storage Instruction	Store at -20°C or lower. Aliquot to avoid repeated freezing and thawing.

Applications

- Western Blot (Cell lysate)

NMI monoclonal antibody (M01), clone 9D8 Western Blot analysis of NMI expression in HeLa (Cat # L013V1).

[Protocol Download](#)

- Western Blot (Transfected lysate)

Western Blot analysis of NMI expression in transfected 293T cell line by NMI monoclonal antibody (M01), clone 9D8.

Lane 1: NMI transfected lysate(35.1 KDa).

Lane 2: Non-transfected lysate.

[Protocol Download](#)

- Western Blot (Recombinant protein)

[Protocol Download](#)

- Immunohistochemistry (Formalin/PFA-fixed paraffin-embedded sections)

Immunoperoxidase of monoclonal antibody to NMI on formalin-fixed paraffin-embedded human tonsil. [antibody concentration 3 ug/ml]

[Protocol Download](#)

- Sandwich ELISA (Recombinant protein)

Detection limit for recombinant GST tagged NMI is approximately 0.03ng/ml as a capture antibody.

[Protocol Download](#)

- ELISA

- RNAi Knockdown (Antibody validated)

Western blot analysis of NMI over-expressed 293 cell line, cotransfected with NMI Validated Chimera RNAi (Cat # H00009111-R01V) (Lane 2) or non-transfected control (Lane 1). Blot probed with NMI monoclonal antibody (M01), clone 9D8 (Cat # H00009111-M01). GAPDH (36.1 kDa) used as specificity and loading control.

[Protocol Download](#)

Gene Info — NMI

Entrez GeneID

[9111](#)

GeneBank Accession#	BC001268
Protein Accession#	AAH01268
Gene Name	NMI
Gene Alias	-
Gene Description	N-myc (and STAT) interactor
Omim ID	603525
Gene Ontology	Hyperlink
Gene Summary	<p>NMYC interactor (NMI) encodes a protein that interacts with NMYC and CMYC (two members of the oncogene Myc family), and other transcription factors containing a Zip, HLH, or HLH-Zip motif. The NMI protein also interacts with all STATs except STAT2 and augments STAT-mediated transcription in response to cytokines IL2 and IFN-gamma. The NMI mRNA has low expression levels in all human fetal and adult tissues tested except brain and has high expression in cancer cell lines-myeloid leukemias. [provided by RefSeq]</p>
Other Designations	N-myc and STAT interactor N-myc interactor N-myc-interactor

Disease

- [Breast cancer](#)
- [Breast Neoplasms](#)
- [Genetic Predisposition to Disease](#)
- [Ovarian cancer](#)
- [Ovarian Neoplasms](#)