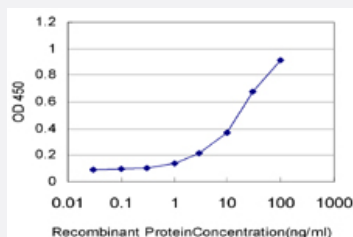


USP10 monoclonal antibody (M01), clone 3B8

Catalog # H00009100-M01

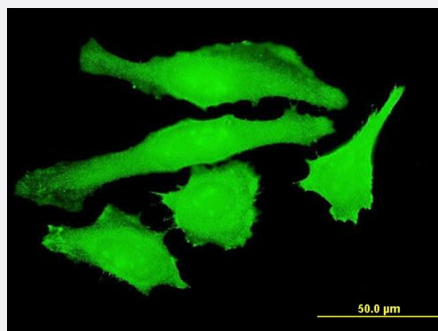
Size 100 ug

Applications



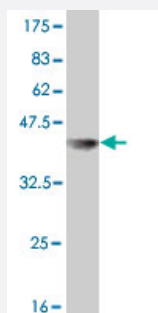
Sandwich ELISA (Recombinant protein)

Detection limit for recombinant GST tagged USP10 is approximately 0.1ng/ml as a capture antibody.



Immunofluorescence

Immunofluorescence of monoclonal antibody to USP10 on HeLa cell . [antibody concentration 10 ug/ml]



Western Blot detection against Immunogen (36.63 KDa) .

Specification

Product Description

Mouse monoclonal antibody raised against a partial recombinant USP10.

Immunogen	USP10 (NP_005144, 699 a.a. ~ 797 a.a) partial recombinant protein with GST tag. MW of the GST tag alone is 26 KDa.
Sequence	KLIKNI EYPVDLEISKELLSPGVKNKNFKCHRTYRLFAVVYHHGNSATGGHYTTDVFQIGLNGWLRID DQTVKVINQYQVVKPTAERTAYLLYYRRVDL
Host	Mouse
Reactivity	Human
Interspecies Antigen Sequence	Mouse (82); Rat (83)
Isotype	IgG2a Kappa
Quality Control Testing	Antibody Reactive Against Recombinant Protein. Western Blot detection against Immunogen (36.63 KDa) .
Storage Buffer	In 1x PBS, pH 7.4
Storage Instruction	Store at -20°C or lower. Aliquot to avoid repeated freezing and thawing.

Applications

- Western Blot (Recombinant protein)

[Protocol Download](#)

- Sandwich ELISA (Recombinant protein)

Detection limit for recombinant GST tagged USP10 is approximately 0.1ng/ml as a capture antibody.

[Protocol Download](#)

- ELISA

- Immunofluorescence

Immunofluorescence of monoclonal antibody to USP10 on HeLa cell . [antibody concentration 10 ug/ml]

Gene Info — USP10

Entrez GeneID [9100](#)

GeneBank Accession# [NM_005153](#)

Protein Accession#	NP_005144
Gene Name	USP10
Gene Alias	KIAA0190, MGC2621, UBPO
Gene Description	ubiquitin specific peptidase 10
Omim ID	609818
Gene Ontology	Hyperlink
Gene Summary	Ubiquitin is a highly conserved protein that is covalently linked to other proteins to regulate their function and degradation. This gene encodes a member of the ubiquitin-specific protease family of cysteine proteases. The enzyme specifically cleaves ubiquitin from ubiquitin-conjugated protein substrates. The protein is found in the nucleus and cytoplasm. It functions as a co-factor of the DNA-bound androgen receptor complex, and is inhibited by a protein in the Ras-GTPase pathway. The human genome contains several pseudogenes similar to this gene. [provided by RefSeq]
Other Designations	ubiquitin carboxyl-terminal hydrolase 10 ubiquitin specific protease 10 ubiquitin thioesterase 10

Disease

- [Tobacco Use Disorder](#)