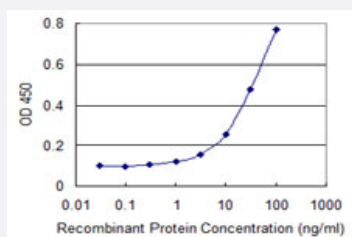


PKMYT1 monoclonal antibody (M03), clone 2A3

Catalog # H00009088-M03

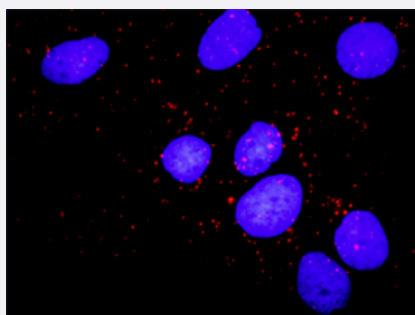
Size 100 ug

Applications



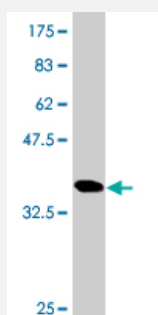
Sandwich ELISA (Recombinant protein)

Detection limit for recombinant GST tagged PKMYT1 is 1 ng/ml as a capture antibody.



In situ Proximity Ligation Assay (Cell)

Proximity Ligation Analysis of protein-protein interactions between CCNB1 and PKMYT1. Huh7 cells were stained with anti-CCNB1 rabbit purified polyclonal 1:1200 and anti-PKMYT1 mouse monoclonal antibody 1:50. Each red dot represents the detection of protein-protein interaction complex, and nuclei were counterstained with DAPI (blue).



Western Blot detection against Immunogen (36.74 KDa) .

Specification

Product Description

Mouse monoclonal antibody raised against a partial recombinant PKMYT1.

Immunogen	PKMYT1 (NP_004194.3, 400 a.a. ~ 499 a.a) partial recombinant protein with GST tag. MW of the GST tag alone is 26 KDa.
Sequence	PASWLQPLGPPATPPGSPPCSLLLDSSLSSNWDDDSLGPSSLSPEAVLARTVGSTSTPRSRCTP RDALDLSINSEPPRGSFPSFEPRNLLSLFEDTLDPT
Host	Mouse
Reactivity	Human
Interspecies Antigen Sequence	Mouse (89); Rat (89)
Isotype	IgG2a Kappa
Quality Control Testing	Antibody Reactive Against Recombinant Protein. Western Blot detection against Immunogen (36.74 KDa) .
Storage Buffer	In 1x PBS, pH 7.4
Storage Instruction	Store at -20°C or lower. Aliquot to avoid repeated freezing and thawing.

Applications

- Western Blot (Recombinant protein)

[Protocol Download](#)

- Sandwich ELISA (Recombinant protein)

Detection limit for recombinant GST tagged PKMYT1 is 1 ng/ml as a capture antibody.

[Protocol Download](#)

- ELISA

- In situ* Proximity Ligation Assay (Cell)

Proximity Ligation Analysis of protein-protein interactions between CCNB1 and PKMYT1. Huh7 cells were stained with anti-CCNB1 rabbit purified polyclonal 1:1200 and anti-PKMYT1 mouse monoclonal antibody 1:50. Each red dot represents the detection of protein-protein interaction complex, and nuclei were counterstained with DAPI (blue).

Gene Info — PKMYT1

Entrez GeneID [9088](#)

GeneBank Accession#	NM_004203
Protein Accession#	NP_004194.3
Gene Name	PKMYT1
Gene Alias	DKFZp547K1610, FLJ20093, MYT1
Gene Description	protein kinase, membrane associated tyrosine/threonine 1
Omim ID	602474
Gene Ontology	Hyperlink
Gene Summary	<p>The protein encoded by this gene is a member of the serine/threonine protein kinase family. This kinase preferentially phosphorylates and inactivates cell division cycle 2 protein (CDC2), and thus negatively regulates cell cycle G2/M transition. This kinase is associated with the membrane throughout the cell cycle. Its activity is highly regulated during the cell cycle. Protein kinases AKT1/PKB and PLK (Polo-like kinase) have been shown to phosphorylate and regulate the activity of this kinase. Alternatively spliced transcript variants encoding distinct isoforms have been reported. [provided by RefSeq]</p>
Other Designations	membrane-associated tyrosine- and threonine-specific cdc2-inhibitory kinase protein kinase Myt1

Pathway

- [Cell cycle](#)