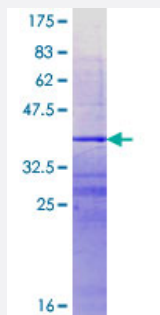


PRY (Human) Recombinant Protein (Q01)

Catalog # H00009081-Q01

Size 25 ug, 10 ug

Applications



Specification

Product Description	Human PRY partial ORF (NP_004667.2, 48 a.a. - 147 a.a.) recombinant protein with GST-tag at N-terminal.
Sequence	EARRKKDLKDSFLWRYGKVGCSLPLREMTAWINPPQISEIFQGYHQRVHGADALSLQTNSLRSLSSQCLGQSFLRLTLERGRGFRALGDICGHVHEED
Host	Wheat Germ (in vitro)
Theoretical MW (kDa)	36.74
Preparation Method	in vitro wheat germ expression system
Purification	Glutathione Sepharose 4 Fast Flow
Quality Control Testing	12.5% SDS-PAGE Stained with Coomassie Blue.
Storage Buffer	50 mM Tris-HCl, 10 mM reduced Glutathione, pH=8.0 in the elution buffer.
Storage Instruction	Store at -80°C. Aliquot to avoid repeated freezing and thawing.
Note	Best use within three months from the date of receipt of this protein.

Applications

- Enzyme-linked Immunoabsorbent Assay
- Western Blot (Recombinant protein)
- Antibody Production
- Protein Array

Gene Info — PRY

Entrez GeneID [9081](#)

GeneBank Accession# [NM_004676](#)

Protein Accession# [NP_004667.2](#)

Gene Name PRY

Gene Alias PRY1, PTPN13LY

Gene Description PTPN13-like, Y-linked

Omim ID [400019](#)

Gene Ontology [Hyperlink](#)

Gene Summary This gene is located in the nonrecombining portion of the Y chromosome, and expressed specifically in testis. It encodes a protein which has a low degree of similarity to protein tyrosine phosphatase, non-receptor type 13. Two nearly identical copies of this gene exist within a palindromic region. This record represents the more telomeric copy. [provided by RefSeq]

Other Designations OTTHUMP00000040742|testis-specific PTP-BL-related protein on Y