

CLDN1 293T Cell Transient Overexpression Lysate(Denatured)

Catalog # H00009076-T01

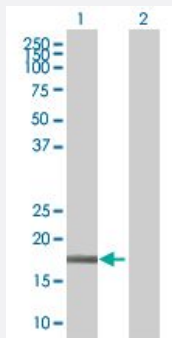
Size 100 uL

Applications



SDS-PAGE Gel

CLDN1 transfected lysate.



Western Blot

Lane 1: CLDN1 transfected lysate (23.32 KDa)

Lane 2: Non-transfected lysate.

Specification

Transfected Cell Line	293T
Plasmid	pCMV-CLDN1 full-length
Host	Human
Theoretical MW (kDa)	23.32
Interspecies Antigen Sequence	Mouse (90); Rat (90)

Quality Control Testing

Transient overexpression cell lysate was tested with Anti-CLDN1 antibody ([H00009076-B01](#)) by Western Blots.
SDS-PAGE Gel
CLDN1 transfected lysate.
Western Blot
Lane 1: CLDN1 transfected lysate (23.32 KDa)
Lane 2: Non-transfected lysate.

Storage Buffer

1X Sample Buffer (50 mM Tris-HCl, 2% SDS, 10% glycerol, 300 mM 2-mercaptoethanol, 0.01% Bromophenol blue)

Storage Instruction

Store at -80°C. Aliquot to avoid repeated freezing and thawing.

Applications

- Western Blot

Gene Info — CLDN1

Entrez GeneID

[9076](#)

GeneBank Accession#

[NM_021101.3](#)

Protein Accession#

[NP_066924.1](#)

Gene Name

CLDN1

Gene Alias

CLD1, ILVASC, SEMP1

Gene Description

claudin 1

Omim ID

[603718](#) [607626](#)

Gene Ontology

[Hyperlink](#)

Gene Summary

Tight junctions represent one mode of cell-to-cell adhesion in epithelial or endothelial cell sheets, forming continuous seals around cells and serving as a physical barrier to prevent solutes and water from passing freely through the paracellular space. These junctions are comprised of sets of continuous networking strands in the outwardly facing cytoplasmic leaflet, with complementary grooves in the inwardly facing extracytoplasmic leaflet. The protein encoded by this gene, a member of the claudin family, is an integral membrane protein and a component of tight junction strands. Loss of function mutations result in neonatal ichthyosis-sclerosing cholangitis syndrome. [provided by RefSeq]

Other Designations

senescence-associated epithelial membrane protein 1

Pathway

- [Cell adhesion molecules \(CAMs\)](#)
- [Leukocyte transendothelial migration](#)
- [Pathogenic Escherichia coli infection - EHEC](#)
- [Tight junction](#)

Disease

- [Genetic Predisposition to Disease](#)
- [Hepatitis C](#)
- [Substance Abuse](#)
- [Tobacco Use Disorder](#)