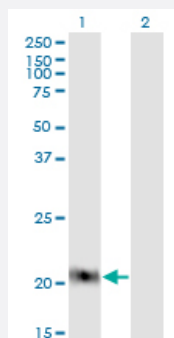


CLDN1 monoclonal antibody (M02), clone 2E2-H5

Catalog # H00009076-M02

Size 100 ug

Applications

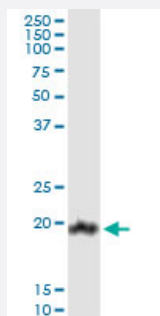


Western Blot (Transfected lysate)

Western Blot analysis of CLDN1 expression in transfected 293T cell line by CLDN1 monoclonal antibody (M02), clone 2E2-H5.

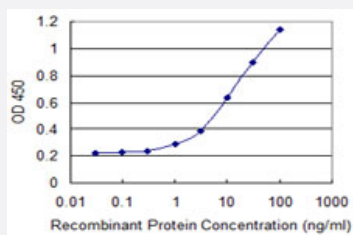
Lane 1: CLDN1 transfected lysate (Predicted MW: 22.7 kDa).

Lane 2: Non-transfected lysate.



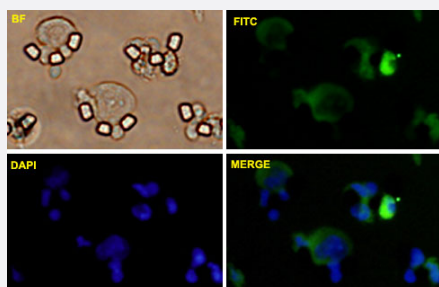
Immunoprecipitation

Immunoprecipitation of CLDN1 transfected lysate using anti-CLDN1 monoclonal antibody and Protein A Magnetic Bead, and immunoblotted with CLDN1 MaxPab rabbit polyclonal antibody.



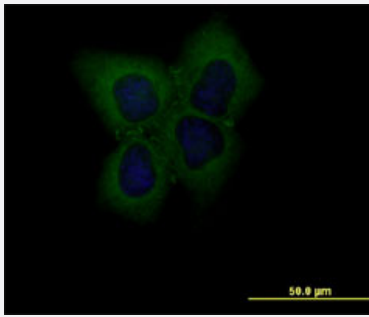
Sandwich ELISA (Recombinant protein)

Detection limit for recombinant GST tagged CLDN1 is 0.3 ng/ml as a capture antibody.



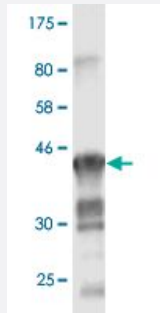
Immunofluorescence (Circulating Tumor Cell)

Huh7 cells were stained with CLDN1-FITC labeled monoclonal antibody (Green). The cell nucleus were counterstained with DAPI (Blue).



Immunofluorescence

Immunofluorescence of monoclonal antibody to CLDN1 on Huh7 cell. [antibody concentration 10 ug/ml]



Western Blot detection against Immunogen (48.95 KDa) .

Specification

Product Description	Mouse monoclonal antibody raised against a full-length recombinant CLDN1.
Immunogen	CLDN1 (AAH12471.1, 1 a.a. ~ 211 a.a) full-length recombinant protein with GST tag. MW of the GST tag alone is 26 KDa.
Sequence	MANAGLQLLGFI LAFLGWIGANVSTALPQWRISYAGDNVTAQAMY EGLWMSCVSQSTGQIQCKV FDSLLNLSSTLQATRALMVVGILLGVIAIFVATVGMKCMKCLEDDEVQKMRMAVIGGAIFLLAGLAIL VATAWYGNRIVQEFYDPMTPVNARYEFGQALFTGWAAASLCLLGALLCCSCPRKTTSYTPRPY PKPAPSSGKDYV
Host	Mouse
Reactivity	Human
Interspecies Antigen Sequence	Mouse (90); Rat (90)
Isotype	IgG2b Kappa
Quality Control Testing	Antibody Reactive Against Recombinant Protein. Western Blot detection against Immunogen (48.95 KDa) .
Storage Buffer	In 1x PBS, pH 7.4
Storage Instruction	Store at -20°C or lower. Aliquot to avoid repeated freezing and thawing.

Applications

- Western Blot (Transfected lysate)

Western Blot analysis of CLDN1 expression in transfected 293T cell line by CLDN1 monoclonal antibody (M02), clone 2E2-H5.

Lane 1: CLDN1 transfected lysate (Predicted MW: 22.7 KDa).

Lane 2: Non-transfected lysate.

[Protocol Download](#)

- Western Blot (Recombinant protein)

[Protocol Download](#)

- Immunoprecipitation

Immunoprecipitation of CLDN1 transfected lysate using anti-CLDN1 monoclonal antibody and Protein A Magnetic Bead, and immunoblotted with CLDN1 MaxPab rabbit polyclonal antibody.

[Protocol Download](#)

- Sandwich ELISA (Recombinant protein)

Detection limit for recombinant GST tagged CLDN1 is 0.3 ng/ml as a capture antibody.

[Protocol Download](#)

- ELISA

- Immunofluorescence (Circulating Tumor Cell)

Huh7 cells were stained with CLDN1-FITC labeled monoclonal antibody (Green). The cell nucleus were counterstained with DAPI (Blue).

- Immunofluorescence

Immunofluorescence of monoclonal antibody to CLDN1 on Huh7 cell. [antibody concentration 10 ug/ml]

Gene Info — CLDN1

Entrez GeneID	9076
---------------	----------------------

GeneBank Accession#	BC012471
---------------------	--------------------------

Protein Accession#	AAH12471.1
--------------------	----------------------------

Gene Name	CLDN1
Gene Alias	CLD1, ILVASC, SEMP1
Gene Description	claudin 1
Omim ID	603718 607626
Gene Ontology	Hyperlink
Gene Summary	Tight junctions represent one mode of cell-to-cell adhesion in epithelial or endothelial cell sheets, forming continuous seals around cells and serving as a physical barrier to prevent solutes and water from passing freely through the paracellular space. These junctions are comprised of sets of continuous networking strands in the outwardly facing cytoplasmic leaflet, with complementary grooves in the inwardly facing extracytoplasmic leaflet. The protein encoded by this gene, a member of the claudin family, is an integral membrane protein and a component of tight junction strands. Loss of function mutations result in neonatal ichthyosis-sclerosing cholangitis syndrome. [provided by RefSeq]
Other Designations	senescence-associated epithelial membrane protein 1

Publication Reference

- [Cutibacterium acnes regulates the epidermal barrier properties of HPV-KER human immortalized keratinocyte cultures.](#)

Beáta Szilvia Bolla, Lilla Erdei, Edit Urbán, Katalin Burián, Lajos Kemény, Kornélia Szabó.

Scientific Reports 2020 Jul; 10(1):12815.

Application: WB-Ce, Human, Human keratinocytes

Pathway

- [Cell adhesion molecules \(CAMs\)](#)
- [Leukocyte transendothelial migration](#)
- [Pathogenic Escherichia coli infection - EHEC](#)
- [Tight junction](#)

Disease

- [Genetic Predisposition to Disease](#)

- [Hepatitis C](#)
- [Substance Abuse](#)
- [Tobacco Use Disorder](#)