

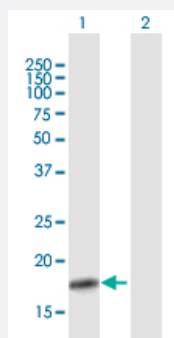
MaxPab®

# CLDN1 MaxPab mouse polyclonal antibody (B01)

Catalog # H00009076-B01

Size 50 uL

## Applications



### Western Blot (Transfected lysate)

Western Blot analysis of CLDN1 expression in transfected 293T cell line ([H00009076-T01](#)) by CLDN1 MaxPab polyclonal antibody.

Lane 1: CLDN1 transfected lysate(23.21 KDa).

Lane 2: Non-transfected lysate.

## Specification

### Product Description

Mouse polyclonal antibody raised against a full-length human CLDN1 protein.

### Immunogen

CLDN1 (NP\_066924.1, 1 a.a. ~ 211 a.a) full-length human protein.

### Sequence

MANAGLQLLGFI LAFLGWIGAVSTALPQWRIYSYAGDNVTAQAMY EGLWMSCVSQSTGQIQCKV  
FDSLLNLSSTLQATRALMVVGILLGVIAIFVATVGMKCMKCLEDDEVQKMRMAVIGGAIFLLAGLAIL  
VATAWYGNRMQEFYDPMTPVFNARYEFGQALFTGWAAASLCLLGALLCCSCPRKTTSYPTPRPY  
PKPAPSSGKDYV

### Host

Mouse

### Reactivity

Human

### Interspecies Antigen Sequence

Mouse (90); Rat (90)

### Quality Control Testing

Antibody reactive against mammalian transfected lysate.

### Storage Buffer

No additive

### Storage Instruction

Store at -20°C or lower. Aliquot to avoid repeated freezing and thawing.

**Note** For IHC and IF applications, antibody purification with Protein A will be needed prior to use.

## Applications

- Western Blot (Transfected lysate)

Western Blot analysis of CLDN1 expression in transfected 293T cell line ([H00009076-T01](#)) by CLDN1 MaxPab polyclonal antibody.

Lane 1: CLDN1 transfected lysate(23.21 KDa).

Lane 2: Non-transfected lysate.

[Protocol Download](#)

## Gene Info — CLDN1

**Entrez GeneID** [9076](#)

**GeneBank Accession#** [NM\\_021101.3](#)

**Protein Accession#** [NP\\_066924.1](#)

**Gene Name** CLDN1

**Gene Alias** CLD1, ILVASC, SEMP1

**Gene Description** claudin 1

**Omim ID** [603718 607626](#)

**Gene Ontology** [Hyperlink](#)

**Gene Summary** Tight junctions represent one mode of cell-to-cell adhesion in epithelial or endothelial cell sheets, forming continuous seals around cells and serving as a physical barrier to prevent solutes and water from passing freely through the paracellular space. These junctions are comprised of sets of continuous networking strands in the outwardly facing cytoplasmic leaflet, with complementary grooves in the inwardly facing extracytoplasmic leaflet. The protein encoded by this gene, a member of the claudin family, is an integral membrane protein and a component of tight junction strands. Loss of function mutations result in neonatal ichthyosis-sclerosing cholangitis syndrome. [provided by RefSeq]

**Other Designations** senescence-associated epithelial membrane protein 1

## Pathway

- [Cell adhesion molecules \(CAMs\)](#)
- [Leukocyte transendothelial migration](#)
- [Pathogenic Escherichia coli infection - EHEC](#)
- [Tight junction](#)

## Disease

- [Genetic Predisposition to Disease](#)
- [Hepatitis C](#)
- [Substance Abuse](#)
- [Tobacco Use Disorder](#)