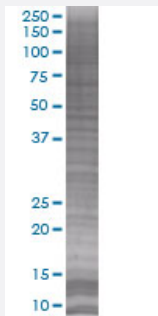


CLDN10 293T Cell Transient Overexpression Lysate(Denatured)

Catalog # H00009071-T01

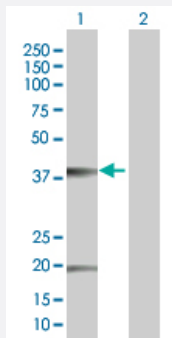
Size 100 uL

Applications



SDS-PAGE Gel

CLDN10 transfected lysate



Western Blot

Lane 1: CLDN10 transfected lysate (25.19 KDa).

Lane 2: Non-transfected lysate.

Specification

Transfected Cell Line	293T
Plasmid	pCMV-CLDN10 full-length
Host	Human
Theoretical MW (kDa)	25.19
Interspecies Antigen Sequence	Mouse (92); Rat (94)

Quality Control Testing

Transient overexpression cell lysate was tested with Anti-CLDN10 antibody ([H00009071-B01](#)) by Western Blots.
SDS-PAGE Gel
CLDN10 transfected lysate
Western Blot
Lane 1: CLDN10 transfected lysate (25.19 KDa).
Lane 2: Non-transfected lysate.

Storage Buffer

1X Sample Buffer (50 mM Tris-HCl, 2% SDS, 10% glycerol, 300 mM 2-mercaptoethanol, 0.01% Bromophenol blue)

Storage Instruction

Store at -80°C. Aliquot to avoid repeated freezing and thawing.

Applications

- Western Blot

Gene Info — CLDN10

Entrez GeneID

[9071](#)

GeneBank Accession#

[BC010920](#)

Protein Accession#

[AAH10920](#)

Gene Name

CLDN10

Gene Alias

CPETRL3, OSP-L

Gene Description

claudin 10

Gene Ontology

[Hyperlink](#)

Gene Summary

This gene encodes a member of the claudin family. Claudins are integral membrane proteins and components of tight junction strands. Tight junction strands serve as a physical barrier to prevent solutes and water from passing freely through the paracellular space between epithelial or endothelial cell sheets. Multiple transcript variants encoding different isoforms have been found for this gene. [provided by RefSeq]

Other Designations

OTTHUMP00000018561|OTTHUMP00000018562

Pathway

- [Cell adhesion molecules \(CAMs\)](#)

- [Leukocyte transendothelial migration](#)
- [Tight junction](#)

Disease

- [Tobacco Use Disorder](#)