

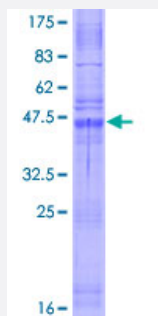
## Full-Length

# CLDN10 (Human) Recombinant Protein (P01)

Catalog # H00009071-P01

Size 25 ug, 10 ug

## Applications



## Specification

### Product Description

Human CLDN10 full-length ORF ( NP\_008915.1, 1 a.a. - 228 a.a.) recombinant protein with GST-tag at N-terminal.

### Sequence

MASTASEIIAFMVSISGWVLVSSTLPTDYWKVSTIDGTVITTATYWANLWKACVTDSTGVSNCDF  
PSMLALDGYIQACRGLMIAAVSLGFFGSIFALFGMKCTKVGGSDKAKAKIACLAGVFILSGLCSMT  
GCSLYANKITTEFFDPLFVEQKYELGAALFIGWAGASLCIIGGVIFCFSISDNNKTPRYTYNGATSV  
SSRTKYHGGEDFKTTNPSKQFDKNAYV

### Host

Wheat Germ (in vitro)

### Theoretical MW (kDa)

50.9

### Interspecies Antigen Sequence

Mouse (92); Rat (94)

### Preparation Method

[in vitro wheat germ expression system](#)

### Purification

Glutathione Sepharose 4 Fast Flow

### Quality Control Testing

12.5% SDS-PAGE Stained with Coomassie Blue.

### Storage Buffer

50 mM Tris-HCl, 10 mM reduced Glutathione, pH=8.0 in the elution buffer.

### Storage Instruction

Store at -80°C. Aliquot to avoid repeated freezing and thawing.

## Note

Best use within three months from the date of receipt of this protein.

## Applications

- Enzyme-linked Immunoabsorbent Assay
- Western Blot (Recombinant protein)
- Antibody Production
- Protein Array

## Gene Info — CLDN10

Entrez GeneID [9071](#)

GeneBank Accession# [NM\\_006984.3](#)

Protein Accession# [NP\\_008915.1](#)

Gene Name CLDN10

Gene Alias CPETRL3, OSP-L

Gene Description claudin 10

Gene Ontology [Hyperlink](#)

**Gene Summary** This gene encodes a member of the claudin family. Claudins are integral membrane proteins and components of tight junction strands. Tight junction strands serve as a physical barrier to prevent solutes and water from passing freely through the paracellular space between epithelial or endothelial cell sheets. Multiple transcript variants encoding different isoforms have been found for this gene. [provided by RefSeq]

Other Designations OTTHUMP00000018561|OTTHUMP00000018562

## Pathway

- [Cell adhesion molecules \(CAMs\)](#)
- [Leukocyte transendothelial migration](#)

- [Tight junction](#)

## Disease

- [Tobacco Use Disorder](#)