

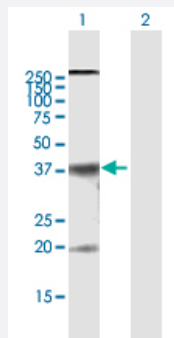
MaxPab®

# CLDN10 purified MaxPab mouse polyclonal antibody (B01P)

Catalog # H00009071-B01P

Size 50 ug

## Applications



### Western Blot (Transfected lysate)

Western Blot analysis of CLDN10 expression in transfected 293T cell line ([H00009071-T01](#)) by CLDN10 MaxPab polyclonal antibody.

Lane 1: CLDN10 transfected lysate(25.19 KDa).

Lane 2: Non-transfected lysate.

## Specification

Product Description	Mouse polyclonal antibody raised against a full-length human CLDN10 protein.
Immunogen	CLDN10 (AAH10920, 1 a.a. ~ 228 a.a) full-length human protein.
Sequence	MASTASEIIAFMVSISGWLVSSLPTDYWKVSTIDGTVITTATYWANLWKACVTDSTGVSNCDF PSMLALDGYIQACRGLMIAAVSLGFFGSIFALFGMKCTKVGGSDDKAKAKIACLAGVFILSGLCSMT GCSLYANKITTEFFDPLFVEQKYELGAALFIGWAGASLCIIGGVIFCFSSISDNNKTPRYTYNGATSV SSRTKYHGGEDFKTTNPSKQFDKNAYV
Host	Mouse
Reactivity	Human
Interspecies Antigen Sequence	Mouse (92); Rat (94)
Quality Control Testing	Antibody reactive against mammalian transfected lysate.
Storage Buffer	In 1x PBS, pH 7.4
Storage Instruction	Store at -20°C or lower. Aliquot to avoid repeated freezing and thawing.

## Applications

- Western Blot (Transfected lysate)

Western Blot analysis of CLDN10 expression in transfected 293T cell line ([H00009071-T01](#)) by CLDN10 MaxPab polyclonal antibody.

Lane 1: CLDN10 transfected lysate(25.19 KDa).

Lane 2: Non-transfected lysate.

[Protocol Download](#)

## Gene Info — CLDN10

Entrez GeneID	<a href="#">9071</a>
---------------	----------------------

GeneBank Accession#	<a href="#">BC010920</a>
---------------------	--------------------------

Protein Accession#	<a href="#">AAH10920</a>
--------------------	--------------------------

Gene Name	CLDN10
-----------	--------

Gene Alias	CPETRL3, OSP-L
------------	----------------

Gene Description	claudin 10
------------------	------------

Gene Ontology	<a href="#">Hyperlink</a>
---------------	---------------------------

Gene Summary	This gene encodes a member of the claudin family. Claudins are integral membrane proteins and components of tight junction strands. Tight junction strands serve as a physical barrier to prevent solutes and water from passing freely through the paracellular space between epithelial or endothelial cell sheets. Multiple transcript variants encoding different isoforms have been found for this gene. [provided by RefSeq]
--------------	--

Other Designations	OTTHUMP00000018561 OTTHUMP00000018562
--------------------	---------------------------------------

## Pathway

- [Cell adhesion molecules \(CAMs\)](#)
- [Leukocyte transendothelial migration](#)
- [Tight junction](#)

## Disease

- [Tobacco Use Disorder](#)