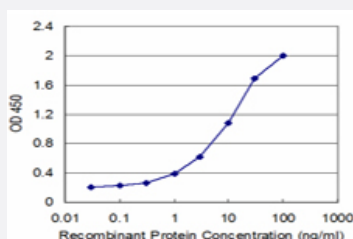


SLC7A7 monoclonal antibody (M04), clone 3B10

Catalog # H00009056-M04

Size 100 ug

Applications



Sandwich ELISA (Recombinant protein)

Detection limit for recombinant GST tagged SLC7A7 is approximately 0.1ng/ml as a capture antibody.

Specification

Product Description	Mouse monoclonal antibody raised against a partial recombinant SLC7A7.
Immunogen	SLC7A7 (NP_003973.2, 462 a.a. ~ 511 a.a) partial recombinant protein with GST tag. MW of the GST tag alone is 26 KDa.
Sequence	RVPEHKRPLYLRRIVGSATRYLQVLCMSVAAEMDLEDGGEMPKQRDPKSN
Host	Mouse
Reactivity	Human
Isotype	IgG2b Kappa
Quality Control Testing	Antibody Reactive Against Recombinant Protein.
Storage Buffer	In 1x PBS, pH 7.4
Storage Instruction	Store at -20°C or lower. Aliquot to avoid repeated freezing and thawing.

Applications

- Sandwich ELISA (Recombinant protein)

Detection limit for recombinant GST tagged SLC7A7 is approximately 0.1ng/ml as a capture antibody.

[Protocol Download](#)

- ELISA

Gene Info — SLC7A7

Entrez GeneID [9056](#)

GeneBank Accession# [NM_003982](#)

Protein Accession# [NP_003973.2](#)

Gene Name SLC7A7

Gene Alias LAT3, LPI, MOP-2, Y+LAT1, y+LAT-1

Gene Description solute carrier family 7 (cationic amino acid transporter, y+ system), member 7

Omim ID [222700 603593](#)

Gene Ontology [Hyperlink](#)

Gene Summary The protein encoded by this gene is the light subunit of a cationic amino acid transporter. This sodium-independent transporter is formed when the light subunit encoded by this gene dimerizes with the heavy subunit transporter protein SLC3A2. This transporter is found in epithelial cell membranes where it transfers cationic and large neutral amino acids from the cell to the extracellular space. Defects in this gene are a cause of lysinuric protein intolerance (LPI). Several transcript variants encoding the same protein have been found for this gene. [provided by RefSeq]

Other Designations OTTHUMP00000164491|OTTHUMP00000164492|OTTHUMP00000164494|monocyte amino acid permease 2|solute carrier family 7 member 7|y(+)L-type amino acid transporter 1

Disease

- [Kidney Failure](#)
- [Tobacco Use Disorder](#)