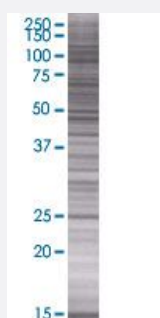


RPL14 293T Cell Transient Overexpression Lysate(Denatured)

Catalog # H00009045-T01

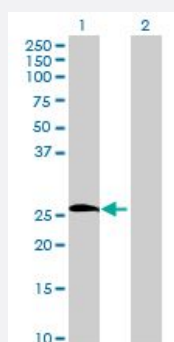
Size 100 uL

Applications



SDS-PAGE Gel

RPL14 transfected lysate.



Western Blot

Lane 1: RPL14 transfected lysate (24.31 KDa)

Lane 2: Non-transfected lysate.

Specification

Transfected Cell Line	293T
Plasmid	pCMV-RPL14 full-length
Host	Human
Theoretical MW (kDa)	24.31
Interspecies Antigen Sequence	Mouse (85); Rat (84)

Quality Control Testing

Transient overexpression cell lysate was tested with Anti-RPL14 antibody ([H00009045-B01](#)) by Western Blots.
SDS-PAGE Gel
RPL14 transfected lysate.
Western Blot
Lane 1: RPL14 transfected lysate (24.31 KDa)
Lane 2: Non-transfected lysate.

Storage Buffer

1X Sample Buffer (50 mM Tris-HCl, 2% SDS, 10% glycerol, 300 mM 2-mercaptoethanol, 0.01% Bromophenol blue)

Storage Instruction

Store at -80°C. Aliquot to avoid repeated freezing and thawing.

Applications

- Western Blot

Gene Info — RPL14

Entrez GeneID

[9045](#)

GeneBank Accession#

[BC071913.1](#)

Protein Accession#

[AAH71913.1](#)

Gene Name

RPL14

Gene Alias

CAG-ISL-7, CTG-B33, L14, MGC88594, RL14, hRL14

Gene Description

ribosomal protein L14

Gene Ontology

[Hyperlink](#)

Gene Summary

Ribosomes, the organelles that catalyze protein synthesis, consist of a small 40S subunit and a large 60S subunit. Together these subunits are composed of 4 RNA species and approximately 80 structurally distinct proteins. This gene encodes a ribosomal protein that is a component of the 60S subunit. The protein belongs to the L14E family of ribosomal proteins. It contains a basic region-leucine zipper (bZIP)-like domain. The protein is located in the cytoplasm. This gene contains a trinucleotide (GCT) repeat tract whose length is highly polymorphic; these triplet repeats result in a stretch of alanine residues in the encoded protein. Transcript variants utilizing alternative polyA signals and alternative 5'-terminal exons exist but all encode the same protein. As is typical for genes encoding ribosomal proteins, there are multiple processed pseudogenes of this gene dispersed through the genome. [provided by RefSeq]

Other Designations

60S ribosomal protein L14

Pathway

- [Ribosome](#)