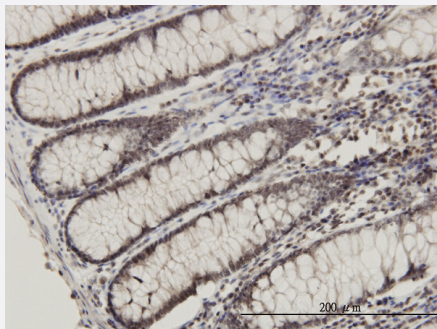


RPL14 monoclonal antibody (M01), clone 1B4

Catalog # H00009045-M01

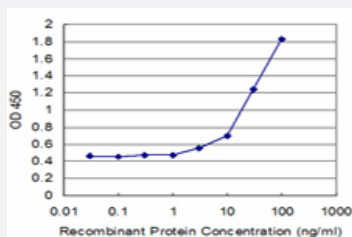
Size 100 ug

Applications



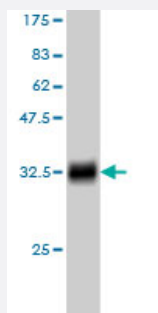
Immunohistochemistry (Formalin/PFA-fixed paraffin-embedded sections)

Immunoperoxidase of monoclonal antibody to RPL14 on formalin-fixed paraffin-embedded human colon. [antibody concentration 3 ug/ml]



Sandwich ELISA (Recombinant protein)

Detection limit for recombinant GST tagged RPL14 is approximately 3ng/ml as a capture antibody.



Western Blot detection against Immunogen (35.64 KDa) .

Specification

Product Description

Mouse monoclonal antibody raised against a partial recombinant RPL14.

Immunogen	RPL14 (NP_003964, 1 a.a. ~ 90 a.a) partial recombinant protein with GST tag. MW of the GST tag alone is 26 KDa.
Sequence	MVFRRFVEVGRVAYVSFGPHAGKLVAVNDVIDQNRALVDGPCTQVRRQAMPFKCMLTDFILKFP HSAHQKYVRQAWQKADINTKWAATR
Host	Mouse
Reactivity	Human
Interspecies Antigen Sequence	Mouse (85); Rat (84)
Isotype	IgG2a Kappa
Quality Control Testing	Antibody Reactive Against Recombinant Protein. Western Blot detection against Immunogen (35.64 KDa) .
Storage Buffer	In 1x PBS, pH 7.4
Storage Instruction	Store at -20°C or lower. Aliquot to avoid repeated freezing and thawing.

Applications

- Western Blot (Recombinant protein)

[Protocol Download](#)

- Immunohistochemistry (Formalin/PFA-fixed paraffin-embedded sections)

Immunoperoxidase of monoclonal antibody to RPL14 on formalin-fixed paraffin-embedded human colon. [antibody concentration 3 ug/ml]

[Protocol Download](#)

- Sandwich ELISA (Recombinant protein)

Detection limit for recombinant GST tagged RPL14 is approximately 3ng/ml as a capture antibody.

[Protocol Download](#)

- ELISA

Gene Info — RPL14

Entrez GeneID

[9045](#)

GeneBank Accession#	NM_003973
Protein Accession#	NP_003964
Gene Name	RPL14
Gene Alias	CAG-ISL-7, CTG-B33, L14, MGC88594, RL14, hRL14
Gene Description	ribosomal protein L14
Gene Ontology	Hyperlink
Gene Summary	<p>Ribosomes, the organelles that catalyze protein synthesis, consist of a small 40S subunit and a large 60S subunit. Together these subunits are composed of 4 RNA species and approximately 80 structurally distinct proteins. This gene encodes a ribosomal protein that is a component of the 60S subunit. The protein belongs to the L14E family of ribosomal proteins. It contains a basic region-leucine zipper (bZIP)-like domain. The protein is located in the cytoplasm. This gene contains a trinucleotide (GCT) repeat tract whose length is highly polymorphic; these triplet repeats result in a stretch of alanine residues in the encoded protein. Transcript variants utilizing alternative polyA signals and alternative 5'-terminal exons exist but all encode the same protein. As is typical for genes encoding ribosomal proteins, there are multiple processed pseudogenes of this gene dispersed through the genome. [provided by RefSeq]</p>
Other Designations	60S ribosomal protein L14

Pathway

- [Ribosome](#)