

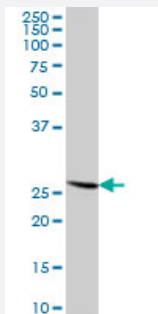
MaxPab®

## RPL14 purified MaxPab mouse polyclonal antibody (B01P)

Catalog # H00009045-B01P

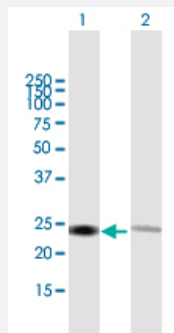
Size 50 ug

### Applications



#### Western Blot (Tissue lysate)

RPL14 MaxPab polyclonal antibody. Western Blot analysis of RPL14 expression in human kidney.



#### Western Blot (Transfected lysate)

Western Blot analysis of RPL14 expression in transfected 293T cell line ([H00009045-T01](#)) by RPL14 MaxPab polyclonal antibody.

Lane 1: RPL14 transfected lysate(24.2 KDa).

Lane 2: Non-transfected lysate.

### Specification

Product Description	Mouse polyclonal antibody raised against a full-length human RPL14 protein.
Immunogen	RPL14 (AAH71913.1, 1 a.a. ~ 220 a.a) full-length human protein.
Sequence	MVFRRFVEVGRVAYVSFGPHAGKLVAMDVIDQNRALVDGPCTQVRRQAMPFKCMLTDFILKFP HSAHQKYVRQAWQKADINTKWAATRWAKKIEARERKAKMTDFDRFKVMKAKKMRNRIKNEVKK LQKAALLKASPKKAPGTGTAACAAAAAAAAAAAAAAAAAKVPAKKITAASKKAPAQKVPAQKATGQKA APAPKAQKGQKAPAQKAPAPKASGKKA
Host	Mouse
Reactivity	Human

Interspecies Antigen Sequence	Mouse (85); Rat (84)
Quality Control Testing	Antibody reactive against mammalian transfected lysate.
Storage Buffer	In 1x PBS, pH 7.4
Storage Instruction	Store at -20°C or lower. Aliquot to avoid repeated freezing and thawing.

## Applications

- Western Blot (Tissue lysate)

RPL14 MaxPab polyclonal antibody. Western Blot analysis of RPL14 expression in human kidney.

[Protocol Download](#)

- Western Blot (Transfected lysate)

Western Blot analysis of RPL14 expression in transfected 293T cell line ([H00009045-T01](#)) by RPL14 MaxPab polyclonal antibody.

Lane 1: RPL14 transfected lysate(24.2 KDa).

Lane 2: Non-transfected lysate.

[Protocol Download](#)

## Gene Info — RPL14

Entrez GeneID	<a href="#">9045</a>
GeneBank Accession#	<a href="#">BC071913.1</a>
Protein Accession#	<a href="#">AAH71913.1</a>
Gene Name	RPL14
Gene Alias	CAG-ISL-7, CTG-B33, L14, MGC88594, RL14, hRL14
Gene Description	ribosomal protein L14
Gene Ontology	<a href="#">Hyperlink</a>

**Gene Summary**

Ribosomes, the organelles that catalyze protein synthesis, consist of a small 40S subunit and a large 60S subunit. Together these subunits are composed of 4 RNA species and approximately 80 structurally distinct proteins. This gene encodes a ribosomal protein that is a component of the 60S subunit. The protein belongs to the L14E family of ribosomal proteins. It contains a basic region-leucine zipper (bZIP)-like domain. The protein is located in the cytoplasm. This gene contains a trinucleotide (GCT) repeat tract whose length is highly polymorphic; these triplet repeats result in a stretch of alanine residues in the encoded protein. Transcript variants utilizing alternative polyA signals and alternative 5'-terminal exons exist but all encode the same protein. As is typical for genes encoding ribosomal proteins, there are multiple processed pseudogenes of this gene dispersed through the genome. [provided by RefSeq]

**Other Designations**

60S ribosomal protein L14

**Publication Reference**

- [Quantification of the Host Response Proteome after Herpes Simplex 1 Virus infection.](#)

Berard AR, Coombs KM, Severini A.

Journal of Proteome Research 2015 May; 14(5):2121.

Application: WB, Human, HEK293 cells

**Pathway**

- [Ribosome](#)