

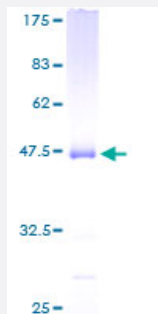
Full-Length

UBE2M (Human) Recombinant Protein (P01)

Catalog # H00009040-P01

Size 25 ug, 10 ug

Applications



Specification

Product Description	Human UBE2M full-length ORF (AAH58924, 1 a.a. - 183 a.a.) recombinant protein with GST-tag at N-terminal.
Sequence	MIKLFSLKQQKKEEESAGGTKGSSKKASAAQLRIQKDINELNLPKTCDISFSDPDDLNFKLVICPD EGFYKSGKFVFSFKVGGYPHDPPKVKCETMVYHPNIDLEGNVCLNILREDWKPVLTINSIYGLQY LFLEPNPEDPLNKEAAEVLQNNRRLFEQNVQRSMRGGYIGSTYFERCLK
Host	Wheat Germ (in vitro)
Theoretical MW (kDa)	45.87
Interspecies Antigen Sequence	Mouse (100); Rat (100)
Preparation Method	in vitro wheat germ expression system
Purification	Glutathione Sepharose 4 Fast Flow
Quality Control Testing	12.5% SDS-PAGE Stained with Coomassie Blue.
Storage Buffer	50 mM Tris-HCl, 10 mM reduced Glutathione, pH=8.0 in the elution buffer.
Storage Instruction	Store at -80°C. Aliquot to avoid repeated freezing and thawing.

Note

Best use within three months from the date of receipt of this protein.

Applications

- Enzyme-linked Immunoabsorbent Assay
- Western Blot (Recombinant protein)
- Antibody Production
- Protein Array

Gene Info — UBE2M

Entrez GeneID [9040](#)

GeneBank Accession# [BC058924](#)

Protein Accession# [AAH58924](#)

Gene Name UBE2M

Gene Alias UBC-RS2, UBC12, hUbc12

Gene Description ubiquitin-conjugating enzyme E2M (UBC12 homolog, yeast)

Omim ID [603173](#)

Gene Ontology [Hyperlink](#)

Gene Summary The modification of proteins with ubiquitin is an important cellular mechanism for targeting abnormal or short-lived proteins for degradation. Ubiquitination involves at least three classes of enzymes: ubiquitin-activating enzymes, or E1s, ubiquitin-conjugating enzymes, or E2s, and ubiquitin-protein ligases, or E3s. This gene encodes a member of the E2 ubiquitin-conjugating enzyme family. The encoded protein is linked with a ubiquitin-like protein, NEDD8, which can be conjugated to cellular proteins, such as Cdc53/culin. [provided by RefSeq]

Other Designations nedd8-conjugating enzyme Ubc12|ubiquitin carrier protein M|ubiquitin-conjugating enzyme E2M|ubiquitin-conjugating enzyme E2M (homologous to yeast UBC12)|ubiquitin-protein ligase M|yeast UBC12 homolog

Pathway

- [Ubiquitin mediated proteolysis](#)