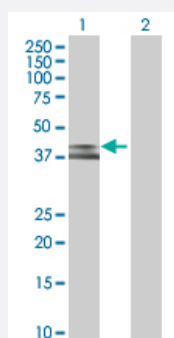


CCRL2 293T Cell Transient Overexpression Lysate(Denatured)

Catalog # H00009034-T02

Size 100 uL

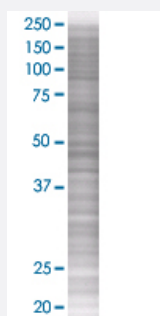
Applications



Western Blot

Lane 1: CCRL2 transfected lysate (39.5 KDa)

Lane 2: Non-transfected lysate.



SDS-PAGE Gel

CCRL2 transfected lysate.

Specification

Transfected Cell Line 293T

Plasmid pCMV-CCRL2 full-length

Host Human

Theoretical MW (kDa) 37.95

Quality Control Testing Transient overexpression cell lysate was tested with Anti-CCRL2 antibody ([H00009034-B02](#)) by Western Blots.
Western Blot
Lane 1: CCRL2 transfected lysate (39.5 KDa)
Lane 2: Non-transfected lysate.
SDS-PAGE Gel
CCRL2 transfected lysate.

Storage Buffer	1X Sample Buffer (50 mM Tris-HCl, 2% SDS, 10% glycerol, 300 mM 2-mercaptoethanol, 0.01% Bromophenol blue)
Storage Instruction	Store at -80°C. Aliquot to avoid repeated freezing and thawing.

Applications

- Western Blot

Gene Info — CCRL2

Entrez GeneID	9034
GeneBank Accession#	NM_003965
Protein Accession#	NP_003956
Gene Name	CCRL2
Gene Alias	CKRX, CRAM-A, CRAM-B, FLJ55815, HCR, MGC116710
Gene Description	chemokine (C-C motif) receptor-like 2
Omim ID	608379
Gene Ontology	Hyperlink
Gene Summary	This gene encodes a chemokine receptor like protein, which is predicted to be a seven transmembrane protein and most closely related to CCR1. Chemokines and their receptors mediated signal transduction are critical for the recruitment of effector immune cells to the site of inflammation. This gene is expressed at high levels in primary neutrophils and primary monocytes, and is further upregulated on neutrophil activation and during monocyte to macrophage differentiation. The function of this gene is unknown. This gene is mapped to the region where the chemokine receptor gene cluster is located. [provided by RefSeq]
Other Designations	chemokine receptor

Disease

- [Cardiovascular Diseases](#)
- [Genetic Predisposition to Disease](#)
- [HIV Infections](#)

- [Narcolepsy](#)