

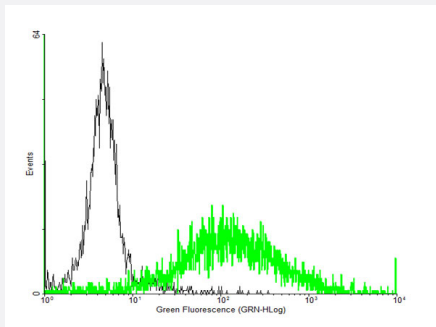
MaxPab®

CCRL2 purified MaxPab mouse polyclonal antibody (B02P)

Catalog # H00009034-B02P

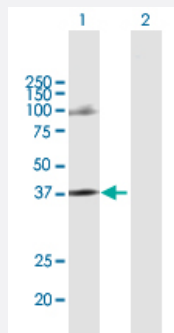
Size 50 ug

Applications



Flow Cytometry

FACS analysis of negative control 293 cells (Black) and CCRL2 expressing 293 cells (Green) using CCRL2 purified MaxPab mouse polyclonal antibody.



Western Blot (Transfected lysate)

Western Blot analysis of CCRL2 expression in transfected 293T cell line ([H00009034-T02](#)) by CCRL2 MaxPab polyclonal antibody.

Lane 1: CCRL2 transfected lysate(37.84 KDa).

Lane 2: Non-transfected lysate.

Specification

Product Description

Mouse polyclonal antibody raised against a full-length human CCRL2 protein.

Immunogen

CCRL2 (NP_003956, 1 a.a. ~ 344 a.a) full-length human protein.

Sequence

MANYTLAPEDEYDVLIEGELESDEAEQCDKYDAQALSAQLVPSLCSAVFVIGVLDNLLVVLILVKY
KGLKRVENMYLLNLAVSNLCFLTLPFWAHAGDPMCKILIGLYFVGLYSETFFNCLLTVQRYLVFLH
KGNFFSARRRVPCGIITSVLAWVTAILATLPEFVVYKPQMEDQKYKAFSRTPLPADETFWKHFL
TLKMNISVLVPLFIFTFLYVQMRKTLRFREQRYSLFKLVFAMVVFLLMWAPYNIAFFLSTFKEHFSL
SDCKSSYNLDKSVHITKLIATTHCCINPLLYAFLDGTFSKYLRCRCFHLSNTPLQPRGQSAQGTSRE
EPDHSTEV

Host

Mouse

Reactivity	Human
Quality Control Testing	Antibody reactive against mammalian transfected lysate.
Storage Buffer	In 1x PBS, pH 7.4
Storage Instruction	Store at -20°C or lower. Aliquot to avoid repeated freezing and thawing.

Applications

- Flow Cytometry

FACS analysis of negative control 293 cells (Black) and CCRL2 expressing 293 cells (Green) using CCRL2 purified MaxPab mouse polyclonal antibody.

- Western Blot (Transfected lysate)

Western Blot analysis of CCRL2 expression in transfected 293T cell line ([H00009034-T02](#)) by CCRL2 MaxPab polyclonal antibody.

Lane 1: CCRL2 transfected lysate(37.84 KDa).

Lane 2: Non-transfected lysate.

[Protocol Download](#)

Gene Info — CCRL2

Entrez GeneID	9034
GeneBank Accession#	NM_003965
Protein Accession#	NP_003956
Gene Name	CCRL2
Gene Alias	CKRX, CRAM-A, CRAM-B, FLJ55815, HCR, MGC116710
Gene Description	chemokine (C-C motif) receptor-like 2
Omim ID	608379
Gene Ontology	Hyperlink

Gene Summary

This gene encodes a chemokine receptor like protein, which is predicted to be a seven transmembrane protein and most closely related to CCR1. Chemokines and their receptors mediated signal transduction are critical for the recruitment of effector immune cells to the site of inflammation. This gene is expressed at high levels in primary neutrophils and primary monocytes, and is further upregulated on neutrophil activation and during monocyte to macrophage differentiation. The function of this gene is unknown. This gene is mapped to the region where the chemokine receptor gene cluster is located. [provided by RefSeq]

Other Designations

chemokine receptor

Disease

- [Cardiovascular Diseases](#)
- [Genetic Predisposition to Disease](#)
- [HIV Infections](#)
- [Narcolepsy](#)