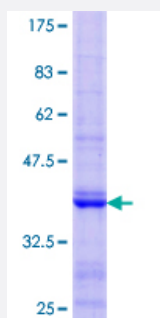


PKD2L1 (Human) Recombinant Protein (Q01)

Catalog # H00009033-Q01

Size 25 ug, 10 ug

Applications



Specification

Product Description	Human PKD2L1 partial ORF (NP_057196.2, 173 a.a. - 272 a.a.) recombinant protein with GST-tag at N-terminal.
Sequence	KWYNNQSLGHGSHSFIYENMLLGVPRLRQLKVRNDSCVVHEDFREDILSCYDVYSPDKEEQLPF GPFNGTAWTYHSQDELGGFSHWGRLTSYSGGGYYL
Host	Wheat Germ (in vitro)
Theoretical MW (kDa)	36.74
Preparation Method	in vitro wheat germ expression system
Purification	Glutathione Sepharose 4 Fast Flow
Quality Control Testing	12.5% SDS-PAGE Stained with Coomassie Blue.
Storage Buffer	50 mM Tris-HCl, 10 mM reduced Glutathione, pH=8.0 in the elution buffer.
Storage Instruction	Store at -80°C. Aliquot to avoid repeated freezing and thawing.
Note	Best use within three months from the date of receipt of this protein.

Applications

- Enzyme-linked Immunoabsorbent Assay
- Western Blot (Recombinant protein)
- Antibody Production
- Protein Array

Gene Info — PKD2L1

Entrez GeneID [9033](#)

GeneBank Accession# [NM_016112](#)

Protein Accession# [NP_057196.2](#)

Gene Name PKD2L1

Gene Alias PCL, PKD2L, PKDL

Gene Description polycystic kidney disease 2-like 1

Omim ID [604532](#)

Gene Ontology [Hyperlink](#)

Gene Summary This gene encodes a member of the polycystin protein family. The encoded protein contains multiple transmembrane domains, and cytoplasmic N- and C-termini. The protein may be an integral membrane protein involved in cell-cell/matrix interactions. This protein functions as a calcium-regulated nonselective cation channel. Alternative splice variants have been described but their full length sequences have not been determined. [provided by RefSeq]

Other Designations OTTHUMP00000020283|polycystic kidney disease (polycystin)-like|polycystin-L

Disease

- [Alzheimer Disease](#)
- [Genetic Predisposition to Disease](#)