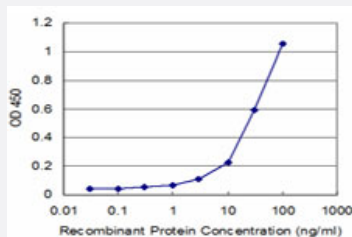


# CLIC3 monoclonal antibody (M04), clone 2C5

Catalog # H00009022-M04

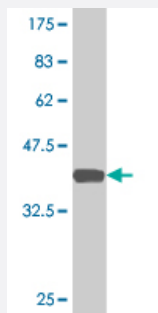
Size 100 ug

## Applications



### Sandwich ELISA (Recombinant protein)

Detection limit for recombinant GST tagged CLIC3 is approximately 3ng/ml as a capture antibody.



Western Blot detection against Immunogen (36.74 KDa) .

## Specification

<b>Product Description</b>	Mouse monoclonal antibody raised against a partial recombinant CLIC3.
<b>Immunogen</b>	CLIC3 (NP_004660, 137 a.a. ~ 236 a.a) partial recombinant protein with GST tag. MW of the GST tag alone is 26 KDa.
<b>Sequence</b>	RLDSYLRAPLEHELAGEPQLRESRRRFLDGDRLTLADCSLLPKLHMDTVCAHFRQAPIPAELRGV RRYLD SAMQEKEFKYTCPHSAEILAA YRPAVHPR
<b>Host</b>	Mouse
<b>Reactivity</b>	Human
<b>Isotype</b>	IgG1 Kappa

Quality Control Testing	Antibody Reactive Against Recombinant Protein. Western Blot detection against Immunogen (36.74 KDa) .
Storage Buffer	In 1x PBS, pH 7.4
Storage Instruction	Store at -20°C or lower. Aliquot to avoid repeated freezing and thawing.

## Applications

- Western Blot (Recombinant protein)

[Protocol Download](#)

- Sandwich ELISA (Recombinant protein)

Detection limit for recombinant GST tagged CLIC3 is approximately 3ng/ml as a capture antibody.

[Protocol Download](#)

- ELISA

## Gene Info — CLIC3

Entrez GeneID	<a href="#">9022</a>
GeneBank Accession#	<a href="#">NM_004669</a>
Protein Accession#	<a href="#">NP_004660</a>
Gene Name	CLIC3
Gene Alias	-
Gene Description	chloride intracellular channel 3
Omim ID	<a href="#">606533</a>
Gene Ontology	<a href="#">Hyperlink</a>
Gene Summary	Chloride channels are a diverse group of proteins that regulate fundamental cellular processes including stabilization of cell membrane potential, transepithelial transport, maintenance of intracellular pH, and regulation of cell volume. Chloride intracellular channel 3 is a member of the p64 family and is predominantly localized in the nucleus and stimulates chloride ion channel activity. In addition, this protein may participate in cellular growth control, based on its association with ERK7, a member of the MAP kinase family. [provided by RefSeq]

**Other Designations**OTTHUMP00000022630

---