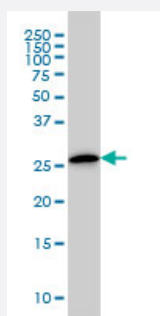


# CLIC3 monoclonal antibody (M02), clone 3F8

Catalog # H00009022-M02

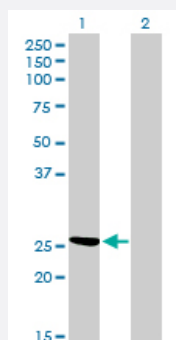
Size 100 ug

## Applications



### Western Blot (Cell lysate)

CLIC3 monoclonal antibody (M02), clone 3F8 Western Blot analysis of CLIC3 expression in A-431 ( Cat # L015V1 ).

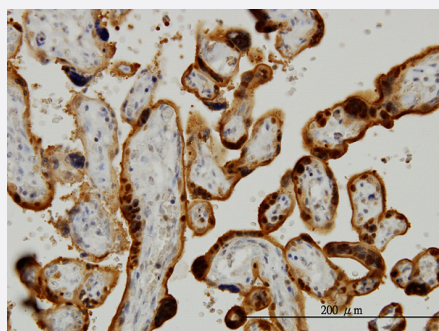


### Western Blot (Transfected lysate)

Western Blot analysis of CLIC3 expression in transfected 293T cell line by CLIC3 monoclonal antibody (M02), clone 3F8.

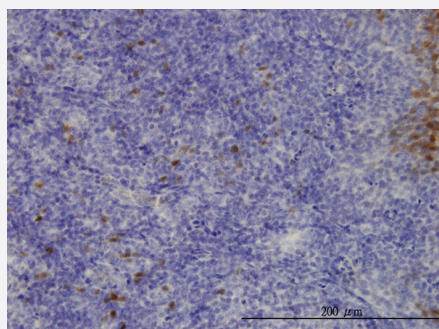
Lane 1: CLIC3 transfected lysate(26.6 KDa).

Lane 2: Non-transfected lysate.



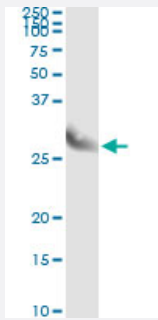
### Immunohistochemistry (Formalin/PFA-fixed paraffin-embedded sections)

Immunoperoxidase of monoclonal antibody to CLIC3 on formalin-fixed paraffin-embedded human placenta. [antibody concentration 3 ug/ml]



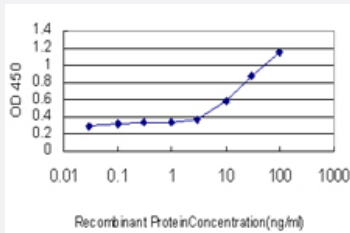
### Immunohistochemistry (Formalin/PFA-fixed paraffin-embedded sections)

Immunoperoxidase of monoclonal antibody to CLIC3 on formalin-fixed paraffin-embedded human tonsil. [antibody concentration 3 ug/ml]



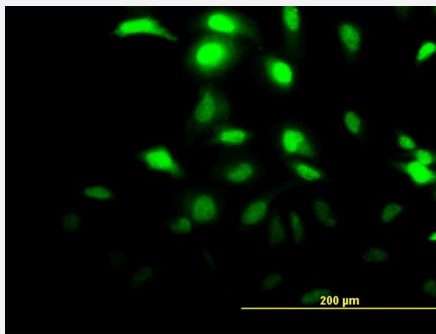
## Immunoprecipitation

Immunoprecipitation of CLIC3 transfected lysate using anti-CLIC3 monoclonal antibody and Protein A Magnetic Bead, and immunoblotted with CLIC3 MaxPab rabbit polyclonal antibody.



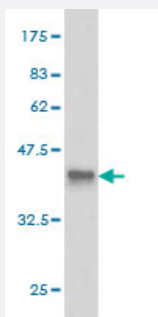
## Sandwich ELISA (Recombinant protein)

Detection limit for recombinant GST tagged CLIC3 is approximately 0.1 ng/ml as a capture antibody.



## Immunofluorescence

Immunofluorescence of monoclonal antibody to CLIC3 on HeLa cell. [antibody concentration 15 ug/ml]



Western Blot detection against Immunogen (36.74 KDa) .

## Specification

### Product Description

Mouse monoclonal antibody raised against a partial recombinant CLIC3.

### Immunogen

CLIC3 (NP\_004660, 137 a.a. ~ 236 a.a) partial recombinant protein with GST tag. MW of the GST tag alone is 26 KDa.

|                                |  |
|--------------------------------|--|
| <b>Sequence</b>                | RLDSYLRAPLEHELAGEPQLRESRRRFLDGDRLTLADCSLLPKLHMDTVCAHFRQAPIPAELRGV<br>RRYLDSAMQEKEFKYTCPHSAEILAAYPVHPR    |
| <b>Host</b>                    | Mouse  |
| <b>Reactivity</b>              | Human  |
| <b>Isotype</b>                 | IgG2a Kappa  |
| <b>Quality Control Testing</b> | Antibody Reactive Against Recombinant Protein.<br>Western Blot detection against Immunogen (36.74 KDa) . |
| <b>Storage Buffer</b>          | In 1x PBS, pH 7.4  |
| <b>Storage Instruction</b>     | Store at -20°C or lower. Aliquot to avoid repeated freezing and thawing.                                 |

## Applications

- Western Blot (Cell lysate)

CLIC3 monoclonal antibody (M02), clone 3F8 Western Blot analysis of CLIC3 expression in A-431 ( Cat # L015V1 ).

[Protocol Download](#)

- Western Blot (Transfected lysate)

Western Blot analysis of CLIC3 expression in transfected 293T cell line by CLIC3 monoclonal antibody (M02), clone 3F8.

Lane 1: CLIC3 transfected lysate(26.6 KDa).

Lane 2: Non-transfected lysate.

[Protocol Download](#)

- Western Blot (Recombinant protein)

[Protocol Download](#)

- Immunohistochemistry (Formalin/PFA-fixed paraffin-embedded sections)

Immunoperoxidase of monoclonal antibody to CLIC3 on formalin-fixed paraffin-embedded human placenta. [antibody concentration 3 ug/ml]

[Protocol Download](#)

- Immunohistochemistry (Formalin/PFA-fixed paraffin-embedded sections)

Immunoperoxidase of monoclonal antibody to CLIC3 on formalin-fixed paraffin-embedded human tonsil. [antibody concentration 3 ug/ml]

[Protocol Download](#)

- Immunoprecipitation

Immunoprecipitation of CLIC3 transfected lysate using anti-CLIC3 monoclonal antibody and Protein A Magnetic Bead, and immunoblotted with CLIC3 MaxPab rabbit polyclonal antibody.

[Protocol Download](#)

- Sandwich ELISA (Recombinant protein)

Detection limit for recombinant GST tagged CLIC3 is approximately 0.1ng/ml as a capture antibody.

[Protocol Download](#)

- ELISA

- Immunofluorescence

Immunofluorescence of monoclonal antibody to CLIC3 on HeLa cell. [antibody concentration 15 ug/ml]

## Gene Info — CLIC3

Entrez GeneID [9022](#)

GeneBank Accession# [NM\\_004669](#)

Protein Accession# [NP\\_004660](#)

Gene Name CLIC3

Gene Alias -

Gene Description chloride intracellular channel 3

Omim ID [606533](#)

Gene Ontology [Hyperlink](#)

**Gene Summary** Chloride channels are a diverse group of proteins that regulate fundamental cellular processes including stabilization of cell membrane potential, transepithelial transport, maintenance of intracellular pH, and regulation of cell volume. Chloride intracellular channel 3 is a member of the p64 family and is predominantly localized in the nucleus and stimulates chloride ion channel activity. In addition, this protein may participate in cellular growth control, based on its association with ERK7, a member of the MAP kinase family. [provided by RefSeq]

Other Designations

OTTHUMP00000022630

## Publication Reference

- [Chloride intercellular channel 3 \(CLIC-3\) suppression-mediated macrophage polarization: a potential indicator of poor prognosis of hepatitis B virus-related acute-on-chronic liver failure.](#)

Jing Liang, Zijie Long, Yanyan Zhang, Jundan Wang, Xiaotong Chen, Xiangfu Liu, Yurong Gu, Wanling Zhang, Tong Zhang, Youming Chen, Genglin Zhang, Weijun Sun, Dongming Kuang, Zhiliang Gao, Yubao Zheng.

Immunology and Cell Biology 2022 May; 100(5):323.

Application: IF, Human, THP-1 cells