

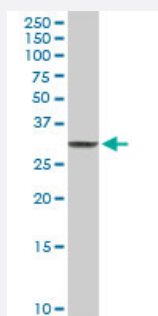
MaxPab®

CLIC3 MaxPab rabbit polyclonal antibody (D01)

Catalog # H00009022-D01

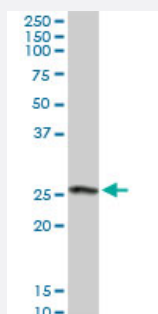
Size 100 uL

Applications



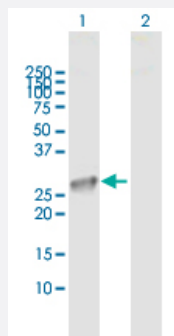
Western Blot (Tissue lysate)

CLIC3 MaxPab rabbit polyclonal antibody. Western Blot analysis of CLIC3 expression in mouse testis.



Western Blot (Tissue lysate)

CLIC3 MaxPab rabbit polyclonal antibody. Western Blot analysis of CLIC3 expression in human placenta.

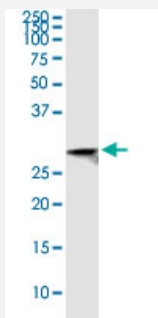


Western Blot (Transfected lysate)

Western Blot analysis of CLIC3 expression in transfected 293T cell line ([H00009022-T02](#)) by CLIC3 MaxPab polyclonal antibody.

Lane 1: CLIC3 transfected lysate(26.60 KDa).

Lane 2: Non-transfected lysate.



Immunoprecipitation

Immunoprecipitation of CLIC3 transfected lysate using anti-CLIC3 MaxPab rabbit polyclonal antibody and Protein A Magnetic Bead, and immunoblotted with CLIC3 purified MaxPab mouse polyclonal antibody (B01P) ([H00009022-B01P](#)).

Specification

Product Description	Rabbit polyclonal antibody raised against a full-length human CLIC3 protein.
Immunogen	CLIC3 (NP_004660.2, 1 a.a. ~ 236 a.a) full-length human protein.
Sequence	MAETKLQLFVKASEDGESVGHCPSCQRLFMVLLKGVPTLTITVDTRRSPDVLKDFAPGSQLPIL LYDSDAKTDTLQIEDFLEETLGPPDFPSLAPRYRESNTAGNDVFHKFSAFIKNPVPAQDEALYQQL LRALARLDSYLRAPLEHELAGEPQLRESRRRFLDGDRLTLADCSSLPLKLMHVDTVCAHFRQAPIPA ELRGVRRYLD SAMQEKEFKYTCPHSAEILAA YRPAVHPR
Host	Rabbit
Reactivity	Human, Mouse
Quality Control Testing	Antibody reactive against mammalian transfected lysate.
Storage Buffer	No additive
Storage Instruction	Store at -20°C or lower. Aliquot to avoid repeated freezing and thawing.

Applications

- Western Blot (Tissue lysate)

CLIC3 MaxPab rabbit polyclonal antibody. Western Blot analysis of CLIC3 expression in mouse testis.

[Protocol Download](#)

- Western Blot (Tissue lysate)

CLIC3 MaxPab rabbit polyclonal antibody. Western Blot analysis of CLIC3 expression in human placenta.

[Protocol Download](#)

- Western Blot (Transfected lysate)

Western Blot analysis of CLIC3 expression in transfected 293T cell line ([H00009022-T02](#)) by CLIC3 MaxPab polyclonal antibody.

Lane 1: CLIC3 transfected lysate(26.60 KDa).

Lane 2: Non-transfected lysate.

[Protocol Download](#)

- Immunoprecipitation

Immunoprecipitation of CLIC3 transfected lysate using anti-CLIC3 MaxPab rabbit polyclonal antibody and Protein A Magnetic Bead, and immunoblotted with CLIC3 purified MaxPab mouse polyclonal antibody (B01P) ([H00009022-B01P](#)).

[Protocol Download](#)

Gene Info — CLIC3

Entrez GeneID [9022](#)

GeneBank Accession# [NM_004669.2](#)

Protein Accession# [NP_004660.2](#)

Gene Name CLIC3

Gene Alias -

Gene Description chloride intracellular channel 3

Omim ID [606533](#)

Gene Ontology [Hyperlink](#)

Gene Summary Chloride channels are a diverse group of proteins that regulate fundamental cellular processes including stabilization of cell membrane potential, transepithelial transport, maintenance of intracellular pH, and regulation of cell volume. Chloride intracellular channel 3 is a member of the p64 family and is predominantly localized in the nucleus and stimulates chloride ion channel activity. In addition, this protein may participate in cellular growth control, based on its association with ERK7, a member of the MAP kinase family. [provided by RefSeq]

Other Designations OTTHUMP00000022630