

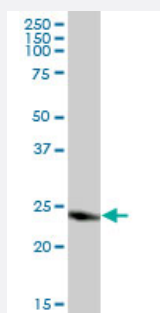
MaxPab®

## CLIC3 purified MaxPab mouse polyclonal antibody (B01P)

Catalog # H00009022-B01P

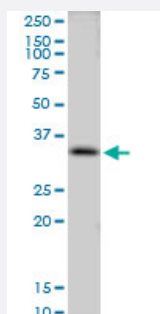
Size 50 ug

### Applications



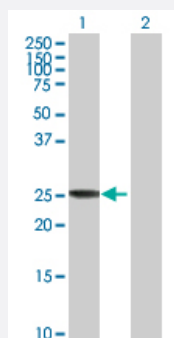
#### Western Blot (Tissue lysate)

CLIC3 MaxPab polyclonal antibody. Western Blot analysis of CLIC3 expression in human pancreas.



#### Western Blot (Cell lysate)

CLIC3 MaxPab polyclonal antibody. Western Blot analysis of CLIC3 expression in A-431.

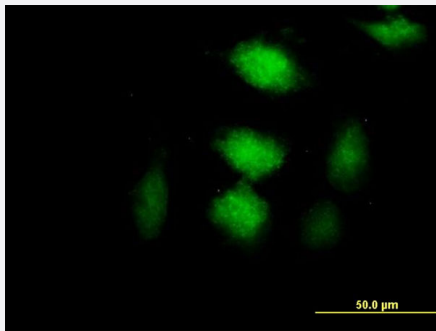


#### Western Blot (Transfected lysate)

Western Blot analysis of CLIC3 expression in transfected 293T cell line ([H00009022-T01](#)) by CLIC3 MaxPab polyclonal antibody.

Lane 1: CLIC3 transfected lysate(25.96 KDa).

Lane 2: Non-transfected lysate.



## Immunofluorescence

Immunofluorescence of purified MaxPab antibody to CLIC3 on HeLa cell.  
[antibody concentration 10 ug/ml]

## Specification

<b>Product Description</b>	Mouse polyclonal antibody raised against a full-length human CLIC3 protein.
<b>Immunogen</b>	CLIC3 (NP_004660.2, 1 a.a. ~ 236 a.a) full-length human protein.
<b>Sequence</b>	MAETKLQLFVKASEDGESVGHCPSCQRLFMVLLKGVPTLTITVDTRRSPDVLKDFAPGSQLPIL LYDSDAKTDTLQIEDFLEETLGPPDFPSLAPRYRESNTAGNDVFHKFSAFIKNPVPAQDEALYQQL LRALARLDSYLRAPLEHELAGEPQLRESRRRFLDGDRLTLADCSSLPKLHMDTVCAHFRQAPIPA ELRGVRRYLD SAMQEKEFKYTCPHSAEILAA YRPAVHPR
<b>Host</b>	Mouse
<b>Reactivity</b>	Human
<b>Quality Control Testing</b>	Antibody reactive against mammalian transfected lysate.
<b>Storage Buffer</b>	In 1x PBS, pH 7.4
<b>Storage Instruction</b>	Store at -20°C or lower. Aliquot to avoid repeated freezing and thawing.

## Applications

- Western Blot (Tissue lysate)

CLIC3 MaxPab polyclonal antibody. Western Blot analysis of CLIC3 expression in human pancreas.

[Protocol Download](#)

- Western Blot (Cell lysate)

CLIC3 MaxPab polyclonal antibody. Western Blot analysis of CLIC3 expression in A-431.

[Protocol Download](#)

- Western Blot (Transfected lysate)

Western Blot analysis of CLIC3 expression in transfected 293T cell line ([H00009022-T01](#)) by CLIC3 MaxPab polyclonal antibody.

Lane 1: CLIC3 transfected lysate(25.96 KDa).

Lane 2: Non-transfected lysate.

[Protocol Download](#)

- Immunofluorescence

Immunofluorescence of purified MaxPab antibody to CLIC3 on HeLa cell. [antibody concentration 10 ug/ml]

## Gene Info — CLIC3

Entrez GeneID	<a href="#">9022</a>
---------------	----------------------

GeneBank Accession#	<a href="#">NM_004669.2</a>
---------------------	-----------------------------

Protein Accession#	<a href="#">NP_004660.2</a>
--------------------	-----------------------------

Gene Name	CLIC3
-----------	-------

Gene Alias	-
------------	---

Gene Description	chloride intracellular channel 3
------------------	----------------------------------

Omim ID	<a href="#">606533</a>
---------	------------------------

Gene Ontology	<a href="#">Hyperlink</a>
---------------	---------------------------

Gene Summary	Chloride channels are a diverse group of proteins that regulate fundamental cellular processes including stabilization of cell membrane potential, transepithelial transport, maintenance of intracellular pH, and regulation of cell volume. Chloride intracellular channel 3 is a member of the p64 family and is predominantly localized in the nucleus and stimulates chloride ion channel activity. In addition, this protein may participate in cellular growth control, based on its association with ERK7, a member of the MAP kinase family. [provided by RefSeq]
--------------	--

Other Designations	OTTHUMP00000022630
--------------------	--------------------