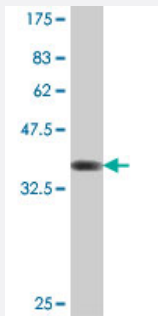


CLIC3 polyclonal antibody (A01)

Catalog # H00009022-A01

Size 50 uL

Applications



Western Blot detection against Immunogen (37.11 kDa) .

Specification

Product Description	Mouse polyclonal antibody raised against a partial recombinant CLIC3.
Immunogen	CLIC3 (NP_004660, 137 a.a. ~ 236 a.a) partial recombinant protein with GST tag.
Sequence	RLDSYLRAPLEHELAGEPQLRESRRRFLDGDRLTLADCSLLPKLHMDTVCAHFRQAPIPAELRGV RRYLD SAMQEKEFKYTCPHSAEILAA YRPAVHPR
Host	Mouse
Reactivity	Human
Quality Control Testing	Antibody Reactive Against Recombinant Protein. Western Blot detection against Immunogen (37.11 kDa) .
Storage Buffer	50 % glycerol
Storage Instruction	Store at -20°C or lower. Aliquot to avoid repeated freezing and thawing.

Applications

- Western Blot (Recombinant protein)

[Protocol Download](#)

- ELISA

Gene Info — CLIC3

Entrez GeneID [9022](#)

GeneBank Accession# [NM_004669](#)

Protein Accession# [NP_004660](#)

Gene Name CLIC3

Gene Alias -

Gene Description chloride intracellular channel 3

Omim ID [606533](#)

Gene Ontology [Hyperlink](#)

Gene Summary Chloride channels are a diverse group of proteins that regulate fundamental cellular processes including stabilization of cell membrane potential, transepithelial transport, maintenance of intracellular pH, and regulation of cell volume. Chloride intracellular channel 3 is a member of the p64 family and is predominantly localized in the nucleus and stimulates chloride ion channel activity. In addition, this protein may participate in cellular growth control, based on its association with ERK7, a member of the MAP kinase family. [provided by RefSeq]

Other Designations OTTHUMP00000022630