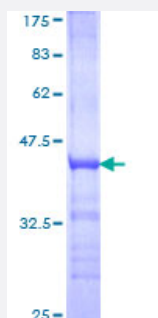


# TAF1A (Human) Recombinant Protein (Q01)

Catalog # H00009015-Q01

Size 25 ug, 10 ug

## Applications



## Specification

<b>Product Description</b>	Human TAF1A partial ORF ( NP_005672, 1 a.a. - 100 a.a.) recombinant protein with GST-tag at N-terminal.
<b>Sequence</b>	MSDFSEELKGPVTDDEEVETSVLSGAGMHFPWLQTYVETVAIGGKRRKDFQAQTTSACLSFIQEAL LKHQWQQAAEYMYSYFQTLEDSDSYKRQAAPEIIV
<b>Host</b>	Wheat Germ (in vitro)
<b>Theoretical MW (kDa)</b>	36.74
<b>Preparation Method</b>	<a href="#">in vitro wheat germ expression system</a>
<b>Purification</b>	Glutathione Sepharose 4 Fast Flow
<b>Quality Control Testing</b>	12.5% SDS-PAGE Stained with Coomassie Blue.
<b>Storage Buffer</b>	50 mM Tris-HCl, 10 mM reduced Glutathione, pH=8.0 in the elution buffer.
<b>Storage Instruction</b>	Store at -80°C. Aliquot to avoid repeated freezing and thawing.
<b>Note</b>	Best use within three months from the date of receipt of this protein.

## Applications

- Enzyme-linked Immunoabsorbent Assay
- Western Blot (Recombinant protein)
- Antibody Production
- Protein Array

## Gene Info — TAF1A

**Entrez GeneID** [9015](#)

**GeneBank Accession#** [NM\\_005681](#)

**Protein Accession#** [NP\\_005672](#)

**Gene Name** TAF1A

**Gene Alias** MGC:17061, RAF48, SL1, TAF48

**Gene Description** TATA box binding protein (TBP)-associated factor, RNA polymerase I, A, 48kDa

**Omim ID** [604903](#)

**Gene Ontology** [Hyperlink](#)

**Gene Summary** Initiation of transcription by RNA polymerase I requires the formation of a complex composed of the TATA-binding protein (TBP) and three TBP-associated factors (TAFs) specific for RNA polymerase I. This complex, known as SL1, binds to the core promoter of ribosomal RNA genes to position the polymerase properly and acts as a channel for regulatory signals. This gene encodes the smallest SL1-specific TAF. Two transcripts encoding different isoforms have been identified. [provided by RefSeq]

**Other Designations** OTTHUMP00000035653|OTTHUMP00000035654|SL1, 48kD subunit|TBP-associated factor 1A