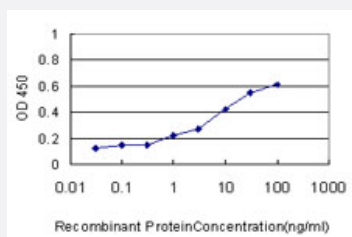


TAF1A monoclonal antibody (M01), clone 1F8

Catalog # H00009015-M01

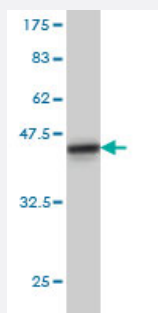
Size 100 ug

Applications



Sandwich ELISA (Recombinant protein)

Detection limit for recombinant GST tagged TAF1A is approximately 0.1ng/ml as a capture antibody.



Western Blot detection against Immunogen (36.74 KDa) .

Specification

Product Description

Mouse monoclonal antibody raised against a partial recombinant TAF1A.

Immunogen

TAF1A (NP_005672, 1 a.a. ~ 100 a.a) partial recombinant protein with GST tag. MW of the GST tag alone is 26 KDa.

Sequence

MSDFSEELKGPVTDDEEVETSVLSGAGMHFPWLQTYVETVAIGGKRRKDFQAQTTSACLSFIQEAL
LKHQWQQAAEYMYSYFQTLESDSYKRQAAPEIIV

Host

Mouse

Reactivity

Human

Isotype

IgG2a Kappa

Quality Control Testing

Antibody Reactive Against Recombinant Protein.
Western Blot detection against Immunogen (36.74 KDa) .

Storage Buffer

In 1x PBS, pH 7.4

Storage Instruction

Store at -20°C or lower. Aliquot to avoid repeated freezing and thawing.

Applications

- Western Blot (Recombinant protein)

[Protocol Download](#)

- Sandwich ELISA (Recombinant protein)

Detection limit for recombinant GST tagged TAF1A is approximately 0.1ng/ml as a capture antibody.

[Protocol Download](#)

- ELISA

Gene Info — TAF1A

Entrez GeneID

[9015](#)

GeneBank Accession#

[NM_005681](#)

Protein Accession#

[NP_005672](#)

Gene Name

TAF1A

Gene Alias

MGC:17061, RAF48, SL1, TAF48

Gene Description

TATA box binding protein (TBP)-associated factor, RNA polymerase I, A, 48kDa

Omim ID

[604903](#)

Gene Ontology

[Hyperlink](#)

Gene Summary

Initiation of transcription by RNA polymerase I requires the formation of a complex composed of the TATA-binding protein (TBP) and three TBP-associated factors (TAFs) specific for RNA polymerase I. This complex, known as SL1, binds to the core promoter of ribosomal RNA genes to position the polymerase properly and acts as a channel for regulatory signals. This gene encodes the smallest SL1-specific TAF. Two transcripts encoding different isoforms have been identified. [provided by RefSeq]

Other Designations

OTTHUMP00000035653|OTTHUMP00000035654|SL1, 48kD subunit|TBP-associated factor 1A