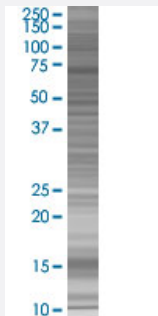


TAF1B 293T Cell Transient Overexpression Lysate(Denatured)

Catalog # H00009014-T01

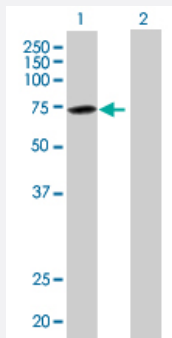
Size 100 uL

Applications



SDS-PAGE Gel

TAF1B transfected lysate.



Western Blot

Lane 1: TAF1B transfected lysate (64.79 KDa)

Lane 2: Non-transfected lysate.

Specification

Transfected Cell Line	293T
Plasmid	pCMV-TAF1B full-length
Host	Human
Theoretical MW (kDa)	64.79
Interspecies Antigen Sequence	Mouse (74); Rat (74)

Quality Control Testing

Transient overexpression cell lysate was tested with Anti-TAF1B antibody ([H00009014-B01](#)) by Western Blots.
 SDS-PAGE Gel
 TAF1B transfected lysate.
 Western Blot
 Lane 1: TAF1B transfected lysate (64.79 KDa)
 Lane 2: Non-transfected lysate.

Storage Buffer

1X Sample Buffer (50 mM Tris-HCl, 2% SDS, 10% glycerol, 300 mM 2-mercaptoethanol, 0.01% Bromophenol blue)

Storage Instruction

Store at -80°C. Aliquot to avoid repeated freezing and thawing.

Applications

- Western Blot

Gene Info — TAF1B

Entrez GeneID

[9014](#)

GeneBank Accession#

[BC018137.2](#)

Protein Accession#

-

Gene Name

TAF1B

Gene Alias

MGC:9349, RAF1B, RAFI63, SL1, TAFI63

Gene Description

TATA box binding protein (TBP)-associated factor, RNA polymerase I, B, 63kDa

Omim ID

[604904](#)

Gene Ontology

[Hyperlink](#)

Gene Summary

Initiation of transcription by RNA polymerase I requires the formation of a complex composed of the TATA-binding protein (TBP) and three TBP-associated factors (TAFs) specific for RNA polymerase I. This complex, known as SL1, binds to the core promoter of ribosomal RNA genes to position the polymerase properly and acts as a channel for regulatory signals. This gene encodes one of the SL1-specific TAFs. [provided by RefSeq]

Other Designations

SL1, 63kD subunit|TBP-associated factor 1B

Disease

- [Tobacco Use Disorder](#)