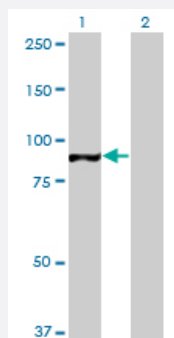


TAF1C monoclonal antibody (M02), clone 3E6

Catalog # H00009013-M02

Size 100 ug

Applications

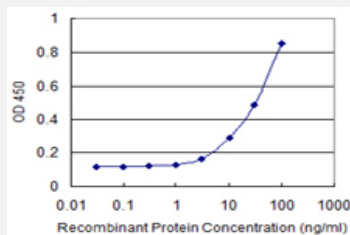


Western Blot (Transfected lysate)

Western Blot analysis of TAF1C expression in transfected 293T cell line by TAF1C monoclonal antibody (M02), clone 3E6.

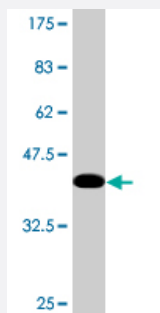
Lane 1: TAF1C transfected lysate (85.1 KDa).

Lane 2: Non-transfected lysate.



Sandwich ELISA (Recombinant protein)

Detection limit for recombinant GST tagged TAF1C is 1 ng/ml as a capture antibody.



Western Blot detection against Immunogen (37.73 KDa).

Specification

Product Description

Mouse monoclonal antibody raised against a partial recombinant TAF1C.

Immunogen	TAF1C (NP_005670.2, 761 a.a. ~ 869 a.a) partial recombinant protein with GST tag. MW of the GST tag alone is 26 KDa.
Sequence	SLSGHVDPSEDTSPPHSPEWPPADALPLPPTTPPSQELTPDACAQGVPSERQMLRDYMAKLP PQRDTPGCATTPPHSQASSVRATRSQQHTPVLSSSQPLRKKPRMGF
Host	Mouse
Reactivity	Human
Interspecies Antigen Sequence	Mouse (65); Rat (66)
Isotype	IgG2a Kappa
Quality Control Testing	Antibody Reactive Against Recombinant Protein. Western Blot detection against Immunogen (37.73 KDa) .
Storage Buffer	In 1x PBS, pH 7.4
Storage Instruction	Store at -20°C or lower. Aliquot to avoid repeated freezing and thawing.

Applications

- Western Blot (Transfected lysate)

Western Blot analysis of TAF1C expression in transfected 293T cell line by TAF1C monoclonal antibody (M02), clone 3E6.

Lane 1: TAF1C transfected lysate(85.1 KDa).

Lane 2: Non-transfected lysate.

[Protocol Download](#)

- Western Blot (Recombinant protein)

[Protocol Download](#)

- Sandwich ELISA (Recombinant protein)

Detection limit for recombinant GST tagged TAF1C is 1 ng/ml as a capture antibody.

[Protocol Download](#)

- ELISA

Gene Info — TAF1C

Entrez GeneID	9013
GeneBank Accession#	NM_005679
Protein Accession#	NP_005670.2
Gene Name	TAF1C
Gene Alias	MGC:39976, SL1, TAFI110, TAFI95
Gene Description	TATA box binding protein (TBP)-associated factor, RNA polymerase I, C, 110kDa
Omim ID	604905
Gene Ontology	Hyperlink
Gene Summary	Initiation of transcription by RNA polymerase I requires the formation of a complex composed of the TATA-binding protein (TBP) and three TBP-associated factors (TAFs) specific for RNA polymerase I. This complex, known as SL1, binds to the core promoter of ribosomal RNA genes to position the polymerase properly and acts as a channel for regulatory signals. This gene encodes the largest SL1-specific TAF. Two transcripts encoding different isoforms have been identified. [provided by RefSeq]
Other Designations	SL1, 110kD subunit TBP-associated factor 1C transcription factor SL1

Disease

- [Kidney Failure](#)