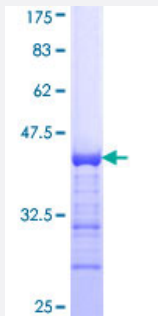


CDKL2 (Human) Recombinant Protein (Q01)

Catalog # H00008999-Q01

Size 25 ug, 10 ug

Applications



Specification

Product Description	Human CDKL2 partial ORF (NP_003939, 394 a.a. - 493 a.a.) recombinant protein with GST-tag at N-terminal.
Sequence	LKDCSNVSVDHTRNPSVAIPPLTHNLSAVAPSINSGMGTTETIPIQGYRVDEKTKKCSIPFVKPNRHS PSGIYNINVTTLVSGPPLSDDSGADLPQMEHQH
Host	Wheat Germ (in vitro)
Theoretical MW (kDa)	36.63
Interspecies Antigen Sequence	Mouse (86); Rat (85)
Preparation Method	in vitro wheat germ expression system
Purification	Glutathione Sepharose 4 Fast Flow
Quality Control Testing	12.5% SDS-PAGE Stained with Coomassie Blue.
Storage Buffer	50 mM Tris-HCl, 10 mM reduced Glutathione, pH=8.0 in the elution buffer.
Storage Instruction	Store at -80°C. Aliquot to avoid repeated freezing and thawing.
Note	Best use within three months from the date of receipt of this protein.

Applications

- Enzyme-linked Immunoabsorbent Assay
- Western Blot (Recombinant protein)
- Antibody Production
- Protein Array

Gene Info — CDKL2

Entrez GeneID	8999
GeneBank Accession#	NM_003948
Protein Accession#	NP_003939
Gene Name	CDKL2
Gene Alias	KKIAMRE, P56
Gene Description	cyclin-dependent kinase-like 2 (CDC2-related kinase)
Omim ID	603442
Gene Ontology	Hyperlink
Gene Summary	This gene product is a member of a large family of CDC2-related serine/threonine protein kinases. It accumulates primarily in the cytoplasm, with lower levels in the nucleus. [provided by RefSeq]
Other Designations	CDC2-related kinase cyclin-dependent kinase-like 2 p56 KKIAMRE protein kinase serine/threonine protein kinase KKIAMRE