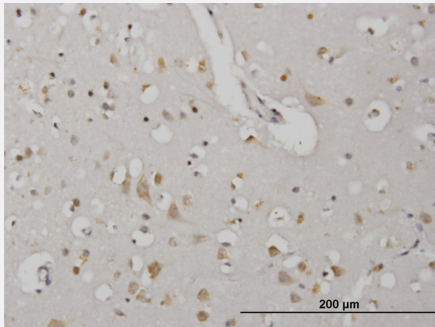


# CDKL2 monoclonal antibody (M01), clone 1F6

Catalog # H00008999-M01

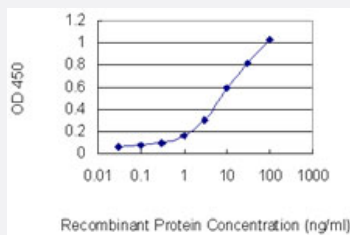
Size 100 ug

## Applications



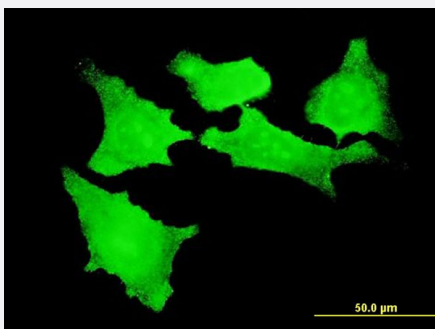
### Immunohistochemistry (Formalin/PFA-fixed paraffin-embedded sections)

Immunoperoxidase of monoclonal antibody to CDKL2 on formalin-fixed paraffin-embedded human cerebral cortex. [antibody concentration 0.7 ug/ml]



### Sandwich ELISA (Recombinant protein)

Detection limit for recombinant GST tagged CDKL2 is 0.1 ng/ml as a capture antibody.



### Immunofluorescence

Immunofluorescence of monoclonal antibody to CDKL2 on HeLa cell . [antibody concentration 10 ug/ml]



Western Blot detection against Immunogen (36.63 KDa) .

## Specification

<b>Product Description</b>	Mouse monoclonal antibody raised against a partial recombinant CDKL2.
<b>Immunogen</b>	CDKL2 (NP_003939, 394 a.a. ~ 493 a.a) partial recombinant protein with GST tag. MW of the GST tag alone is 26 KDa.
<b>Sequence</b>	LKDCSNVSVDHTRNPSVAIPPLTHNLSAVAPSINSGMGTTETIPIQGYRVDEKTKKCSIPFVKPNRHS PSGIYNINVTTLVSGPPLSDDSGADLPQMEHQH
<b>Host</b>	Mouse
<b>Reactivity</b>	Human
<b>Interspecies Antigen Sequence</b>	Mouse (86); Rat (85)
<b>Isotype</b>	IgG1 Kappa
<b>Quality Control Testing</b>	Antibody Reactive Against Recombinant Protein. Western Blot detection against Immunogen (36.63 KDa) .
<b>Storage Buffer</b>	In 1x PBS, pH 7.4
<b>Storage Instruction</b>	Store at -20°C or lower. Aliquot to avoid repeated freezing and thawing.

## Applications

- Western Blot (Recombinant protein)

[Protocol Download](#)

- Immunohistochemistry (Formalin/PFA-fixed paraffin-embedded sections)

Immunoperoxidase of monoclonal antibody to CDKL2 on formalin-fixed paraffin-embedded human cerebral cortex. [antibody concentration 0.7 ug/ml]

[Protocol Download](#)

- Sandwich ELISA (Recombinant protein)

Detection limit for recombinant GST tagged CDKL2 is 0.1 ng/ml as a capture antibody.

[Protocol Download](#)

- ELISA

- Immunofluorescence

Immunofluorescence of monoclonal antibody to CDKL2 on HeLa cell . [antibody concentration 10 ug/ml]

## Gene Info — CDKL2

Entrez GeneID [8999](#)

GeneBank Accession# [NM\\_003948](#)

Protein Accession# [NP\\_003939](#)

Gene Name CDKL2

Gene Alias KKIAMRE, P56

Gene Description cyclin-dependent kinase-like 2 (CDC2-related kinase)

Omim ID [603442](#)

Gene Ontology [Hyperlink](#)

**Gene Summary** This gene product is a member of a large family of CDC2-related serine/threonine protein kinases. It accumulates primarily in the cytoplasm, with lower levels in the nucleus. [provided by RefSeq]

**Other Designations** CDC2-related kinase|cyclin-dependent kinase-like 2|p56 KKIAMRE protein kinase|serine/threonine protein kinase KKIAMRE