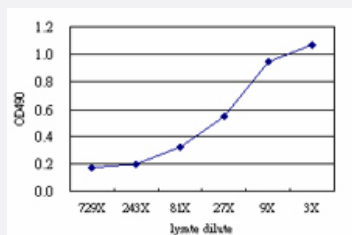


STBD1 (Human) Matched Antibody Pair

Catalog # H00008987-AP51

Size 1 Set

Applications



Sandwich ELISA detection sensitivity ranging from approximately 243x to 3x dilution of the STBD1 293T overexpression lysate (non-denatured).

Specification

Product Description	This antibody pair set comes with a matched antibody pair to detect and quantify the protein level of human STBD1.
Reactivity	Human
Interspecies Antigen Sequence	Mouse (62); Rat (63)
Quality Control Testing	Standard curve using STBD1 293T overexpression lysate (non-denatured) as an analyte. Sandwich ELISA detection sensitivity ranging from approximately 243x to 3x dilution of the STBD1 293T overexpression lysate (non-denatured).
Supplied Product	Antibody pair set content: 1. Capture antibody: mouse monoclonal anti-STBD1 (100 ug) 2. Detection antibody: rabbit purified polyclonal anti-STBD1 (50 ug) *Reagents are sufficient for at least 3-5 x 96 well plates using recommended protocols.
Storage Instruction	Store reagents of the antibody pair set at -20°C or lower. Please aliquot to avoid repeated freeze thaw cycle. Reagents should be returned to -20°C storage immediately after use.

Applications

- ELISA Pair (Transfected lysate)

[Protocol Download](#)

Gene Info — STBD1

Entrez GeneID	8987
Gene Name	STBD1
Gene Alias	FLJ41801, GENEX3414, GENX-3414
Gene Description	starch binding domain 1
Omim ID	607406
Gene Ontology	Hyperlink
Other Designations	genethonin 1