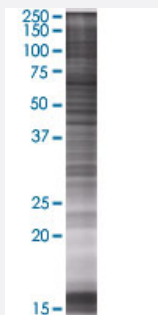


WASL 293T Cell Transient Overexpression Lysate(Denatured)

Catalog # H00008976-T01

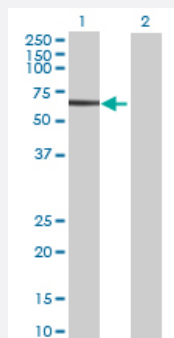
Size 100 uL

Applications



SDS-PAGE Gel

WASL transfected lysate.



Western Blot

Lane 1: WASL transfected lysate (55.66 KDa)

Lane 2: Non-transfected lysate.

Specification

Transfected Cell Line 293T

Plasmid pCMV-WASL full-length

Host Human

Theoretical MW (kDa) 55.66

Quality Control Testing Transient overexpression cell lysate was tested with Anti-WASL antibody ([H00008976-B01](#)) by Western Blots.
 SDS-PAGE Gel
 WASL transfected lysate.
 Western Blot
 Lane 1: WASL transfected lysate (55.66 KDa)
 Lane 2: Non-transfected lysate.

Storage Buffer	1X Sample Buffer (50 mM Tris-HCl, 2% SDS, 10% glycerol, 300 mM 2-mercaptoethanol, 0.01% Bromophenol blue)
Storage Instruction	Store at -80°C. Aliquot to avoid repeated freezing and thawing.

Applications

- Western Blot

Gene Info — WASL

Entrez GeneID	8976
GeneBank Accession#	NM_003941.2
Protein Accession#	NP_003932.3
Gene Name	WASL
Gene Alias	DKFZp779G0847, MGC48327, N-WASP, NWASP
Gene Description	Wiskott-Aldrich syndrome-like
Omim ID	605056
Gene Ontology	Hyperlink

Gene Summary	The Wiskott-Aldrich syndrome (WAS) family of proteins share similar domain structure, and are involved in transduction of signals from receptors on the cell surface to the actin cytoskeleton. The presence of a number of different motifs suggests that they are regulated by a number of different stimuli, and interact with multiple proteins. Recent studies have demonstrated that these proteins, directly or indirectly, associate with the small GTPase, Cdc42, known to regulate formation of actin filaments, and the cytoskeletal organizing complex, Arp2/3. The WASL gene product is a homolog of WAS protein, however, unlike the latter, it is ubiquitously expressed and shows highest expression in neural tissues. It has been shown to bind Cdc42 directly, and induce formation of long actin microspikes. [provided by RefSeq]
--------------	--

Other Designations	Wiskott-Aldrich syndrome gene-like Wiskott-Aldrich syndrome gene-like protein neural Wiskott-Aldrich syndrome protein
--------------------	---

Pathway

- [Adherens junction](#)

- [Chemokine signaling pathway](#)
- [Fc gamma R-mediated phagocytosis](#)
- [Pathogenic Escherichia coli infection - EHEC](#)
- [Regulation of actin cytoskeleton](#)