

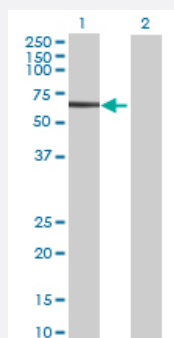
MaxPab®

WASL MaxPab mouse polyclonal antibody (B01P)

Catalog # H00008976-B01P

Size 50 ug

Applications



Western Blot (Transfected lysate)

Western Blot analysis of WASL expression in transfected 293T cell line (H00008976-T01) by WASL MaxPab polyclonal antibody.

Lane 1: WASL transfected lysate(55.55 KDa).

Lane 2: Non-transfected lysate.

Specification

Product Description	Mouse polyclonal antibody raised against a full-length human WASL protein.
Immunogen	WASL (NP_003932.3, 1 a.a. ~ 505 a.a) full-length human protein.
Sequence	MSSVQQQPPPPRRVTNVGSLLLTPQENESLFTFLGKKCVTMSSAVVQLYAADRNCMWSKKCSG VACLVKDNPQRSYFLRIFDIKD GKLLWEQELYNFVYNsprgyfhtfagdtcQVALNFANEEEEK KFRKAVTDLLGRRQRKSEKRRDPPNGPNLPMATVDIKNPEITTNRFYGPQVNNISHTKEKKKGKA KKKRLTKADIGTPSNFQHIGHV GWD PNTGFDLNNLDPELKNLFD MCGISEAQLKDRETSKVIYDFIE KTGGVEAVKNELRRQAPPPPPPSRGGPPPPPPPHNSGPPPPPPARGRGAPPPPPSRAPTAAP PPPPPSRPSVAVPPPPPNRMYP PPPPALPSSAPSGPPPPPPPSVLGVGPVAPPPPPPPPPPPG PPPPPGLP SDGDH QVPTTAGNKAALLDQIREGAQLKKVEQNSRPVSCSGRDALLDQIRQGIQLKS VADGQESTPPTPAPTSGV GALMEVMQKRSKAIHSSDEDEDEDEDEDFEDDDEWED
Host	Mouse
Reactivity	Human
Quality Control Testing	Antibody reactive against mammalian transfected lysate.
Storage Buffer	In 1x PBS, pH 7.4
Storage Instruction	Store at -20°C or lower. Aliquot to avoid repeated freezing and thawing.

Applications

- Western Blot (Transfected lysate)

Western Blot analysis of WASL expression in transfected 293T cell line ([H00008976-T01](#)) by WASL MaxPab polyclonal antibody.

Lane 1: WASL transfected lysate(55.55 KDa).

Lane 2: Non-transfected lysate.

[Protocol Download](#)

Gene Info — WASL

Entrez GeneID [8976](#)

GeneBank Accession# [NM_003941.2](#)

Protein Accession# [NP_003932.3](#)

Gene Name WASL

Gene Alias DKFZp779G0847, MGC48327, N-WASP, NWASP

Gene Description Wiskott-Aldrich syndrome-like

Omim ID [605056](#)

Gene Ontology [Hyperlink](#)

Gene Summary The Wiskott-Aldrich syndrome (WAS) family of proteins share similar domain structure, and are involved in transduction of signals from receptors on the cell surface to the actin cytoskeleton. The presence of a number of different motifs suggests that they are regulated by a number of different stimuli, and interact with multiple proteins. Recent studies have demonstrated that these proteins, directly or indirectly, associate with the small GTPase, Cdc42, known to regulate formation of actin filaments, and the cytoskeletal organizing complex, Arp2/3. The WASL gene product is a homolog of WAS protein, however, unlike the latter, it is ubiquitously expressed and shows highest expression in neural tissues. It has been shown to bind Cdc42 directly, and induce formation of long actin microspikes. [provided by RefSeq]

Other Designations Wiskott-Aldrich syndrome gene-like|Wiskott-Aldrich syndrome gene-like protein|neural Wiskott-Aldrich syndrome protein

Pathway

- [Adherens junction](#)
- [Chemokine signaling pathway](#)
- [Fc gamma R-mediated phagocytosis](#)
- [Pathogenic Escherichia coli infection - EHEC](#)
- [Regulation of actin cytoskeleton](#)