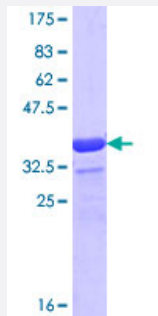


WASF1 (Human) Recombinant Protein (Q01)

Catalog # H00008936-Q01

Size 25 ug, 10 ug

Applications



Specification

Product Description	Human WASF1 partial ORF (NP_003922.1, 198 a.a. - 297 a.a.) recombinant protein with GST-tag at N-terminal.
Sequence	HDRRREWQKLAQGPELAEDDANLLHKHIEVANGPASHFETRPQTYVDHMDGSYLSALPFSQM SELLTRAEEERVLVRPHEPPPPPMHGAGDAKPIPTCI
Host	Wheat Germ (in vitro)
Theoretical MW (kDa)	36.74
Interspecies Antigen Sequence	Mouse (97); Rat (94)
Preparation Method	in vitro wheat germ expression system
Purification	Glutathione Sepharose 4 Fast Flow
Quality Control Testing	12.5% SDS-PAGE Stained with Coomassie Blue.
Storage Buffer	50 mM Tris-HCl, 10 mM reduced Glutathione, pH=8.0 in the elution buffer.
Storage Instruction	Store at -80°C. Aliquot to avoid repeated freezing and thawing.
Note	Best use within three months from the date of receipt of this protein.

Applications

- Enzyme-linked Immunoabsorbent Assay
- Western Blot (Recombinant protein)
- Antibody Production
- Protein Array

Gene Info — WASF1

Entrez GeneID	8936
GeneBank Accession#	NM_003931
Protein Accession#	NP_003922.1
Gene Name	WASF1
Gene Alias	FLJ31482, KIAA0269, SCAR1, WAVE, WAVE1
Gene Description	WAS protein family, member 1
Omim ID	605035
Gene Ontology	Hyperlink
Gene Summary	The protein encoded by this gene, a member of the Wiskott-Aldrich syndrome protein (WASP)-family, plays a critical role downstream of Rac, a Rho-family small GTPase, in regulating the actin cytoskeleton required for membrane ruffling. It has been shown to associate with an actin nucleation core Arp2/3 complex while enhancing actin polymerization in vitro. Wiskott-Aldrich syndrome is a disease of the immune system, likely due to defects in regulation of actin cytoskeleton. Multiple alternatively spliced transcript variants encoding the same protein have been found for this gene. [provided by RefSeq]
Other Designations	OTTHUMP00000016990 Wiskott-Aldrich syndrome protein family member 1 homology of dictyostelium scar 1 verprolin homology domain-containing protein 1

Pathway

- [Adherens junction](#)
- [Fc gamma R-mediated phagocytosis](#)

- [Regulation of actin cytoskeleton](#)