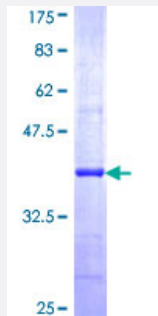


AP1G2 (Human) Recombinant Protein (Q01)

Catalog # H00008906-Q01

Size 25 ug, 10 ug

Applications



Specification

| | |
|--------------------------------------|---|
| Product Description | Human AP1G2 partial ORF (NP_003908, 686 a.a. - 785 a.a.) recombinant protein with GST-tag at N-terminal. |
| Sequence | RPPENPALLITITATNFSEGDVTHFICQAAVPKSLQLQLQAPSGNTVPARGGLPITQLFRILNPNKA PLRLKLRLTYDHFHQSVQEIFEVNNLPVESWQ |
| Host | Wheat Germ (in vitro) |
| Theoretical MW (kDa) | 36.74 |
| Interspecies Antigen Sequence | Mouse (80); Rat (80) |
| Preparation Method | in vitro wheat germ expression system |
| Purification | Glutathione Sepharose 4 Fast Flow |
| Quality Control Testing | 12.5% SDS-PAGE Stained with Coomassie Blue. |
| Storage Buffer | 50 mM Tris-HCl, 10 mM reduced Glutathione, pH=8.0 in the elution buffer. |
| Storage Instruction | Store at -80°C. Aliquot to avoid repeated freezing and thawing. |
| Note | Best use within three months from the date of receipt of this protein. |

Applications

- Enzyme-linked Immunoabsorbent Assay
- Western Blot (Recombinant protein)
- Antibody Production
- Protein Array

Gene Info — AP1G2

Entrez GeneID [8906](#)

GeneBank Accession# [NM_003917](#)

Protein Accession# [NP_003908](#)

Gene Name AP1G2

Gene Alias G2AD

Gene Description adaptor-related protein complex 1, gamma 2 subunit

Omim ID [603534](#)

Gene Ontology [Hyperlink](#)

Gene Summary

Adaptins are important components of clathrin-coated vesicles transporting ligand-receptor complexes from the plasma membrane or from the trans-Golgi network to lysosomes. The adaptin family of proteins is composed of four classes of molecules named alpha, beta-, beta prime- and gamma-adaptins. Adaptins, together with medium and small subunits, form a heterotetrameric complex called an adaptor, whose role is to promote the formation of clathrin-coated pits and vesicles. The protein encoded by this gene is a gamma-adaptin protein and it belongs to the adaptor complex large subunits family. This protein along with the complex is thought to function at some trafficking step in the complex pathways between the trans-Golgi network and the cell surface. There are two alternatively spliced transcript variants of this gene encoding the same protein. [provided by RefSeq]

Other Designations clathrin-associated/assembly/adaptor protein, large, gamma-2|gamma2-adaptin