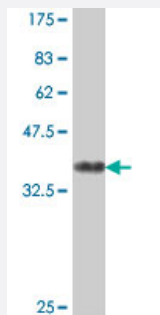


AP1G2 polyclonal antibody (A01)

Catalog # H00008906-A01

Size 50 uL

Applications



Western Blot detection against Immunogen (37.11 KDa) .

Specification

Product Description	Mouse polyclonal antibody raised against a partial recombinant AP1G2.
Immunogen	AP1G2 (NP_003908, 686 a.a. ~ 785 a.a) partial recombinant protein with GST tag.
Sequence	RPPENPALLLITITATNFSEGDVTHFICQAAVPKSLQLQLQAPSGNTVPARGGLPITQLFRILNPNKA PLRLKLRLTYDHFHQSVQEIFEVNNLPVESWQ
Host	Mouse
Reactivity	Human
Interspecies Antigen Sequence	Mouse (80); Rat (80)
Quality Control Testing	Antibody Reactive Against Recombinant Protein. Western Blot detection against Immunogen (37.11 KDa) .
Storage Buffer	50 % glycerol
Storage Instruction	Store at -20°C or lower. Aliquot to avoid repeated freezing and thawing.

Applications

- Western Blot (Recombinant protein)

[Protocol Download](#)

- ELISA

Gene Info — AP1G2

Entrez GeneID [8906](#)

GeneBank Accession# [NM_003917](#)

Protein Accession# [NP_003908](#)

Gene Name AP1G2

Gene Alias G2AD

Gene Description adaptor-related protein complex 1, gamma 2 subunit

Omim ID [603534](#)

Gene Ontology [Hyperlink](#)

Gene Summary

Adaptins are important components of clathrin-coated vesicles transporting ligand-receptor complexes from the plasma membrane or from the trans-Golgi network to lysosomes. The adaptin family of proteins is composed of four classes of molecules named alpha, beta-, beta prime- and gamma-adaptins. Adaptins, together with medium and small subunits, form a heterotetrameric complex called an adaptor, whose role is to promote the formation of clathrin-coated pits and vesicles. The protein encoded by this gene is a gamma-adaptin protein and it belongs to the adaptor complex large subunits family. This protein along with the complex is thought to function at some trafficking step in the complex pathways between the trans-Golgi network and the cell surface. There are two alternatively spliced transcript variants of this gene encoding the same protein. [provided by RefSeq]

Other Designations clathrin-associated/assembly/adaptor protein, large, gamma-2|gamma2-adaptin