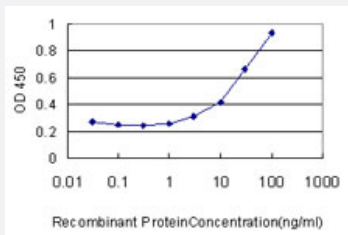


AP1S2 monoclonal antibody (M01), clone 3B9-G5

Catalog # H00008905-M01

Size 100 ug

Applications



Sandwich ELISA (Recombinant protein)

Detection limit for recombinant GST tagged AP1S2 is approximately 3ng/ml as a capture antibody.

Specification

Product Description	Mouse monoclonal antibody raised against a full length recombinant AP1S2.
Immunogen	AP1S2 (AAH01117, 1 a.a. ~ 157 a.a) full-length recombinant protein with GST tag. MW of the GST tag alone is 26 KDa.
Sequence	MQFMLLFSRQGKLRQLQKWYVPLSDKEKKKITRELVTQTLARKPKMCSFLEWRDLKIVYKRYASLY FCCAIEDQDNELITLIIHRYVELLDKYFGSVCELDIIFNFEKAYFILDEFLLGGEVQETSKKNVLKAIE QADLLQEEAETPRSVLEEIGLT
Host	Mouse
Reactivity	Human
Interspecies Antigen Sequence	Mouse (98); Rat (100)
Isotype	IgG2b kappa
Quality Control Testing	Antibody Reactive Against Recombinant Protein.
Storage Buffer	In 1x PBS, pH 7.4
Storage Instruction	Store at -20°C or lower. Aliquot to avoid repeated freezing and thawing.

Applications

- Sandwich ELISA (Recombinant protein)

Detection limit for recombinant GST tagged AP1S2 is approximately 3ng/ml as a capture antibody.

[Protocol Download](#)

- ELISA

Gene Info — AP1S2

Entrez GeneID	8905
GeneBank Accession#	BC001117
Protein Accession#	AAH01117
Gene Name	AP1S2
Gene Alias	DC22, MGC:1902, MRX59, SIGMA1B
Gene Description	adaptor-related protein complex 1, sigma 2 subunit
Omim ID	300629 300630
Gene Ontology	Hyperlink
Gene Summary	Adaptor protein complex 1 is found at the cytoplasmic face of coated vesicles located at the Golgi complex, where it mediates both the recruitment of clathrin to the membrane and the recognition of sorting signals within the cytosolic tails of transmembrane receptors. This complex is a heterotrimer composed of two large, one medium, and one small adaptin subunit. The protein encoded by this gene serves as the small subunit of this complex and is a member of the adaptin protein family. Transcript variants utilizing alternative polyadenylation signals exist for this gene. [provided by RefSeq]
Other Designations	OTTHUMP00000022979 adaptor-related protein complex 1 sigma 2 subunit clathrin adaptor complex AP1 sigma 1B subunit clathrin assembly protein complex 1 sigma-1B small chain clathrin-associated/assembly/adaptor protein small 1-like golgi adaptor HA1/AP1 ada

Pathway

- [Lysosome](#)