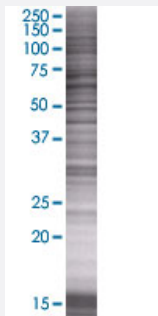


CPNE1 293T Cell Transient Overexpression Lysate(Denatured)

Catalog # H00008904-T01

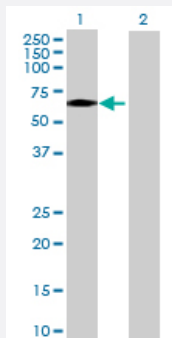
Size 100 uL

Applications



SDS-PAGE Gel

CPNE1 transfected lysate.



Western Blot

Lane 1: CPNE1 transfected lysate (59.18 KDa)

Lane 2: Non-transfected lysate.

Specification

Transfected Cell Line	293T
Plasmid	pCMV-CPNE1 full-length
Host	Human
Theoretical MW (kDa)	59.18
Interspecies Antigen Sequence	Mouse (91); Rat (91)

Quality Control Testing

Transient overexpression cell lysate was tested with Anti-CPNE1 antibody ([H00008904-B01](#)) by Western Blots.
SDS-PAGE Gel
CPNE1 transfected lysate.
Western Blot
Lane 1: CPNE1 transfected lysate (59.18 KDa)
Lane 2: Non-transfected lysate.

Storage Buffer

1X Sample Buffer (50 mM Tris-HCl, 2% SDS, 10% glycerol, 300 mM 2-mercaptoethanol, 0.01% Bromophenol blue)

Storage Instruction

Store at -80°C. Aliquot to avoid repeated freezing and thawing.

Applications

- Western Blot

Gene Info — CPNE1

Entrez GeneID[8904](#)**GeneBank Accession#**[NM_003915.2](#)**Protein Accession#**[NP_003906.1](#)**Gene Name**

CPNE1

Gene Alias

COPN1, CPN1, MGC1142

Gene Description

copine I

Omim ID[604205](#)**Gene Ontology**[Hyperlink](#)**Gene Summary**

Calcium-dependent membrane-binding proteins may regulate molecular events at the interface of the cell membrane and cytoplasm. This gene encodes a calcium-dependent protein that also contains two N-terminal type II C2 domains and an integrin A domain-like sequence in the C-terminus. However, the encoded protein does not contain a predicted signal sequence or transmembrane domains. This protein has a broad tissue distribution and it may function in membrane trafficking. This gene and the gene for RNA binding motif protein 12 overlap at map location 20q11.21. Alternative splicing results in multiple transcript variants encoding different proteins. [provided by RefSeq]

Other Designations

OTTHUMP00000030775|OTTHUMP00000030776|copine-1